

SHAHEED MINAR

**BANGLADESH AMERICAN CENTER (BAC)
13415 RENN ROAD, HOUSTON, TX 77083**

GENERAL NOTES:

- THESE NOTES ARE APPLICABLE FOR SHEET 2 OF 8 THROUGH SHEET 8 OF 8 IN CASE OF CONFLICT AUTHORITY SHALL BE: FIRST THE DRAWINGS; SECOND THESE NOTES; AND THIRD, THE SPECIFICATIONS.
- ANALYSIS & DESIGN OF SHAHEED MINAR MONUMENT IS PERFORMED PER INTERNATIONAL BUILDING CODE(IBC) 2006 FOR BANGLADESH AMERICAN CENTER LOCATED AT 13415 RENN ROAD HOUSTON TX. -77083
- FOR DIMENSIONS SHOWN, THE CENTRAL SHAHEED MINAR LOCATED AT BESIDE DHAKA MEDICAL COLLEGE, WAS SURVEYED ON 5TH MAY 2010.
- ALL STEEL FABRICATION AND ERECTION SHALL BE IN ACCORDANCE WITH THE CONTRACT DOCUMENTS, INCLUDING BUT NOT LIMITED TO THE FOLLOWING:
 - AISC STEEL CONSTRUCTION MANUAL, THIRTEENTH EDITION.
 - ANSI/AISC 360-05 SPECIFICATIONS FOR STRUCTURAL STEEL BUILDINGS, LATEST EDITION.
 - SPECIFICATIONS FOR STRUCTURAL JOINTS USING ASTM A325 OR A490 BOLTS, LATEST EDITION.
 - CODE OF STANDARD PRACTICE FOR STEEL BUILDINGS AND BRIDGES, LATEST EDITION.
 - AWS D1.1 LATEST EDITION
- STRUCTURES SHALL BE ADEQUATELY SUPPORTED DURING FABRICATION AND ERECTION TO PREVENT EXCESSIVE DEFLECTION AND STRESSES, AND DANGER TO PERSONNEL.

MATERIALS:

- PIPE SHALL CONFORM TO ASTM A53, TYPE E OR S, GRADE B.
- HOLLOW STRUCTURAL SECTIONS SHALL CONFORM TO ASTM A500 OR ASTM A501, GRADE B.
- WELDING ELECTRODES USED FOR CONNECTION SHALL CONFORM TO AWS A5.1, WITH A MINIMUM ELECTRODE TENSILE STRENGTH OF 70 ksi, U.N.O.

ANCHOR BOLTS:

- BOLT DIAMETERS, PLATE THICKNESS AND WELDS SHOWN SHALL BE USED AS PER ON THE DESIGN DRAWING.
- EDGES OF BASE PLATE SHALL BE ROLLED OR GAS CUT.
- ANCHOR BOLTS ARE STANDARD MACHINE BOLT, A-307, WITH HEXAGON HEAD.
- NUTS SHALL BE HEAVY HEX TYPE IN ACCORDANCE WITH ASTM A-563, GRADE A.
- REFER TO FOUNDATION DRAWINGS FOR BOLT LENGTH AND PROJECTION.
- ANCHOR BOLT SHALL BE SET ACCURATELY AND HELD IN PLACE BY TEMPLATES.
- PLAIN WASHER SHALL BE PROVIDED WITH ALL BOLTS.

COATINGS:

COATING & PAINTING SPECIFICATIONS SHALL BE PROVIDED AT THE TIME OF FABRICATION.

WELDING:

- ALL WELDING AND WELD INSPECTION SHALL BE PERFORMED IN ACCORDANCE WITH THE REQUIREMENTS OF LATEST EDITION OF AWS D1.1.
- ALL WELDS SHALL BE COMPLETE JOINT PENETRATION WELDS UNLESS OTHERWISE NOTED ON THE DESIGN DRAWINGS.
- ALL WELDS SHALL BE CONTINUOUS UNLESS NOTED OTHERWISE ON THE DESIGN DRAWINGS.
- ALL FILLET WELDS INDICATED ON STANDARD DRAWINGS SHALL BE AISC MINIMUM OR 1/8", WHICHEVER IS LARGER.
- MINIMUM FILLET WELD SIZES SHALL BE AS FOLLOW:
 - FOR THICKNESS OF 1/8" TO 3/8" OF JOINED MEMBERS, THE WELD LEG SIZE SHALL BE 3/16"
 - FOR THICKNESS GREATER THAN 3/8" OF JOINED MEMBERS, THE WELD LEG SIZE SHALL BE ONE-HALF OF THE THINNEST JOINED MEMBER. EXAMPLE: 1/4" IS THE MINIMUM FILLET WELD LEG SIZE OF WELDS JOINING TWO MEMBERS THAT ARE 1/2" AND 3/4" THICK.
- WELD ACCESS HOLES SHALL BE LEFT OPEN.

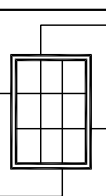
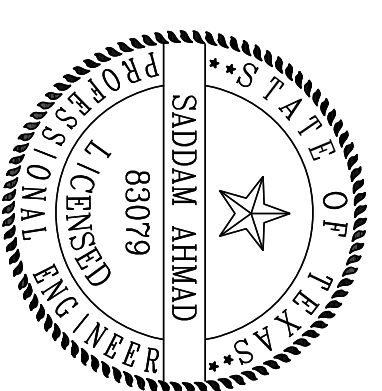
Drawing Index

SHT. NO.	REV	DATE	DRAWING TITLE
1	0	06/29/10	TITLE SHEET & GENERAL NOTES
2	0	06/29/10	PLAN VIEW
3	0	06/29/10	ELEVATION VIEW
4	0	06/29/10	COLUMN SCHEDULE
5	0	06/29/10	COLUMN PLATE DETAIL
6	0	06/29/10	BASE PLATE DETAIL
7	0	06/29/10	DETAIL OF CIRCULAR PLATE
8	0	06/29/10	FRAME DETAIL

REF. DRAWINGS

DWG. NO.	DESCRIPTION

NO.	BY	DATE	REVISION	CHKD. BY	DATE
0	NH	06/29/10	APPROVED FOR CONSTRUCTION	MTS	06/29/10
1	NH	05/20/10	REVISED FOR APPROVAL	MTS	05/20/10
2	MSJ	03/09/10	ISSUED FOR APPROVAL	MH	03/09/10

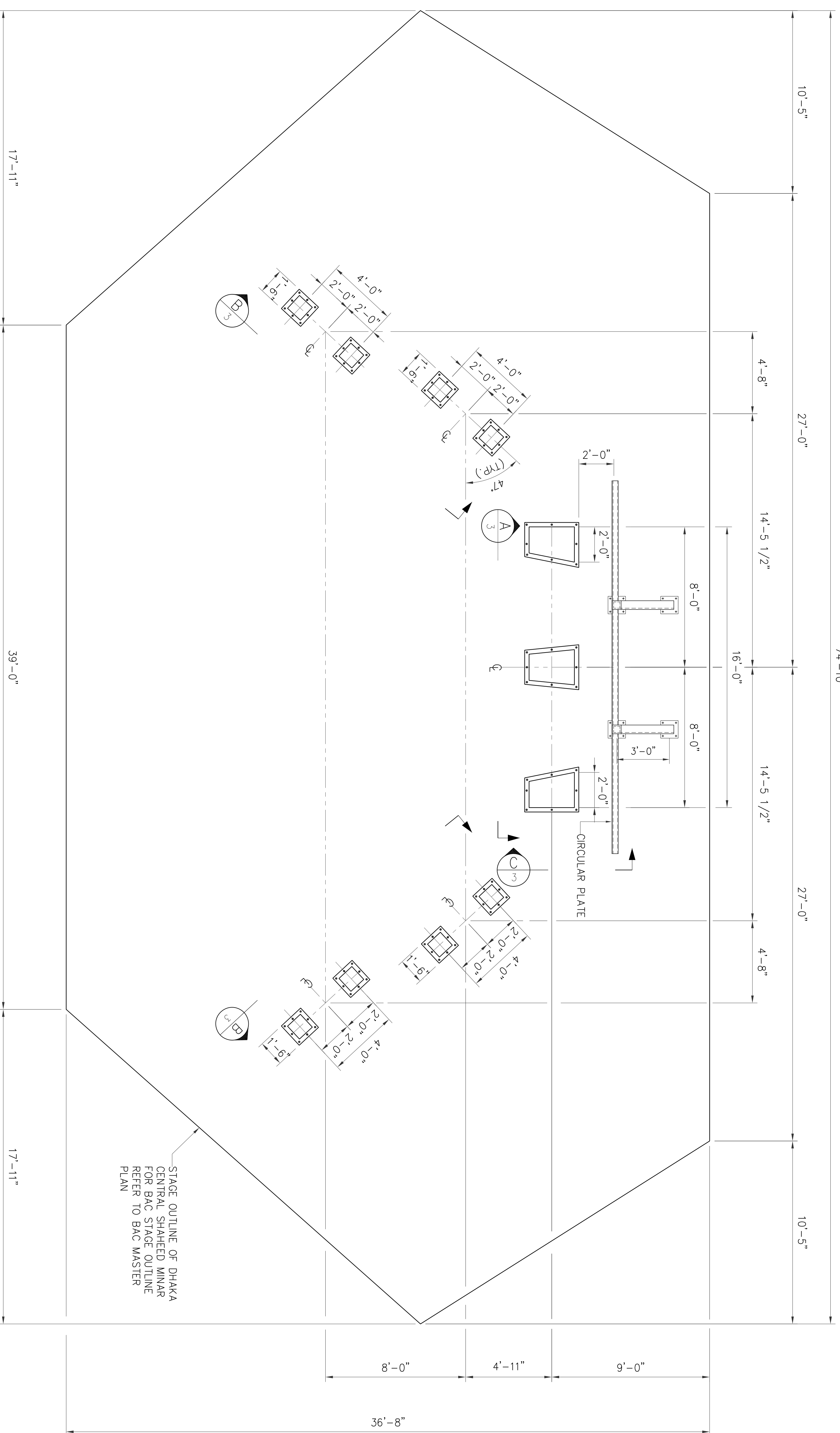
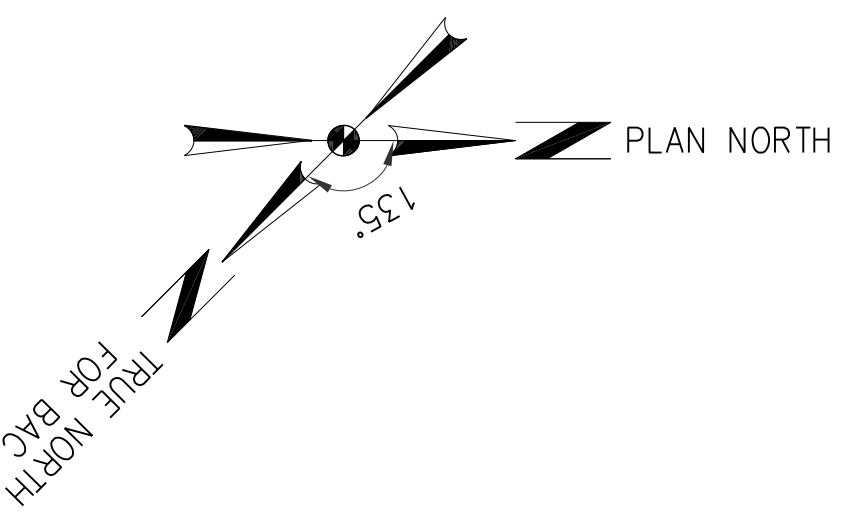


ENGINEERING ALLIANCE INC.
F-10447

BANGLADESH AMERICAN CENTER

SHAHEED MINAR
TITLE SHEET & GENERAL NOTES

OWNER:	DATE:	STRUCTURAL ENGINEER:	PROJECT NO.:	WORK NO.:
MAHS	06/29/10	Engineering Alliance Inc.	BAC10003	----
			REVISION:	SCALE:
			0	N.T.S.
				TIME SHEET:
				1 OF 8



PLAN VIEW

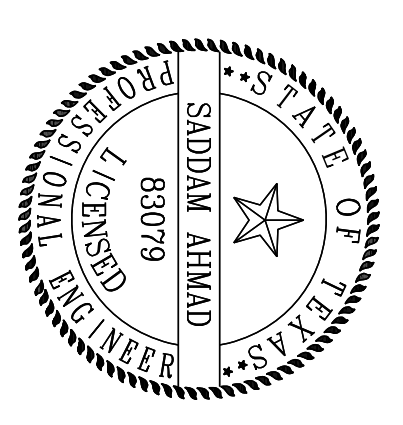
NOTES:
1. FOR GENERAL NOTES SEE SHEET 1

REF. DRAWINGS

DWG. NO.	DESCRIPTION
SHAHEED MINAR ELEVATION VIEW	

NO.	BY	DATE	REVISION
0	NH	06/29/10	APPROVED FOR CONSTRUCTION
1	NH	05/20/10	REVISED FOR APPROVAL
2	MSJ	03/09/10	ISSUED FOR APPROVAL

NO.	CHKD. BY	DATE
0	MTS	06/29/10
1	MTS	05/20/10
2	MH	03/09/10



ENGINEERING ALLIANCE INC.
F-10447

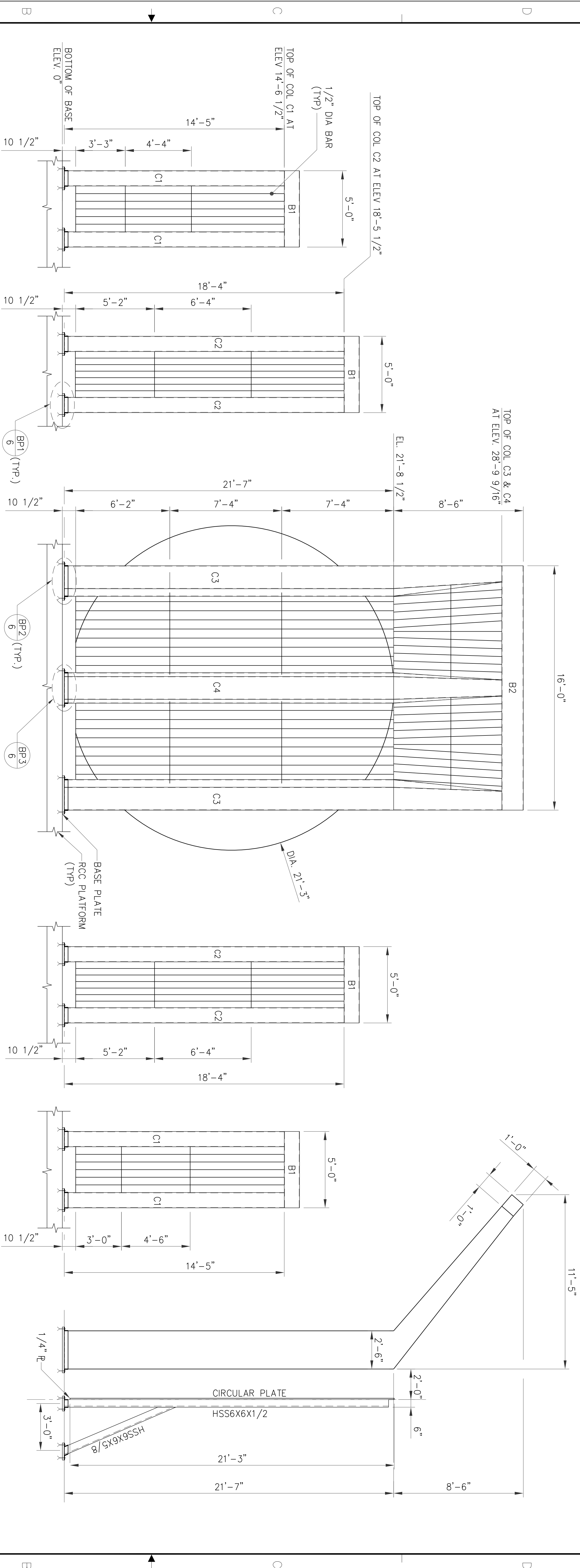
DATE: 06/29/10
STRUCTURAL ENGINEER: Engineering Alliance Inc.
PROJECT NO: BAC10003

MAHS
BANGLADESH AMERICAN CENTER

SHAHEED MINAR PLAN VIEW

W/O. NO.:
REVISION: 0
SCALE: N.T.S.
DWG. SHEET: 2 OF 8

NOTES:
1. FOR GENERAL NOTES SEE SHEET 1

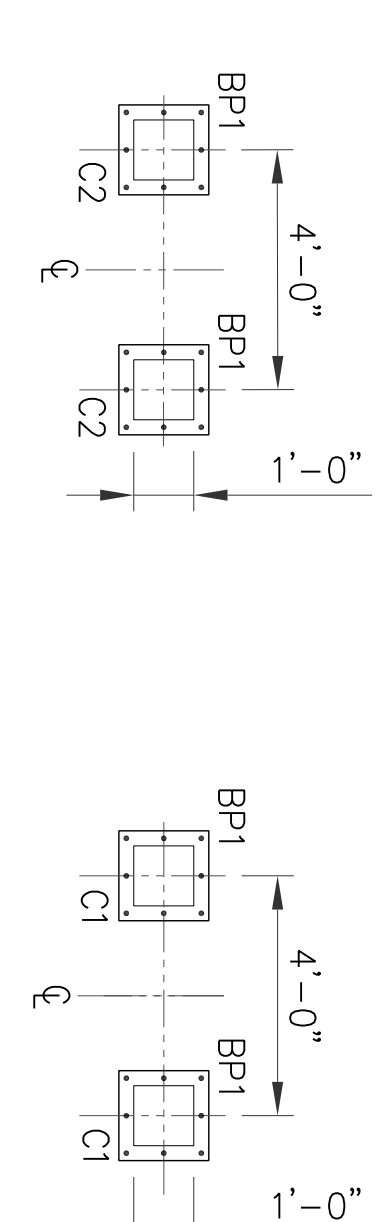
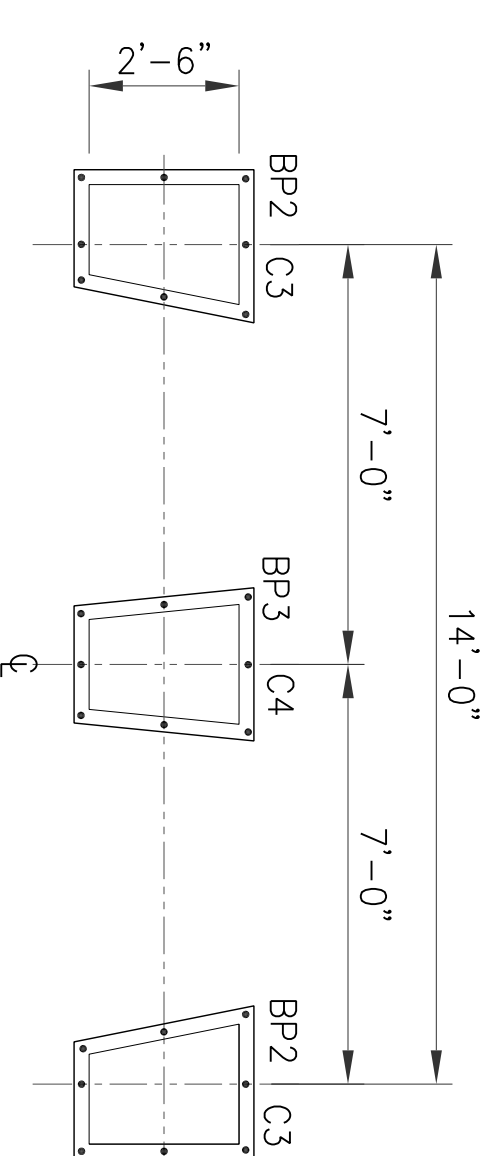
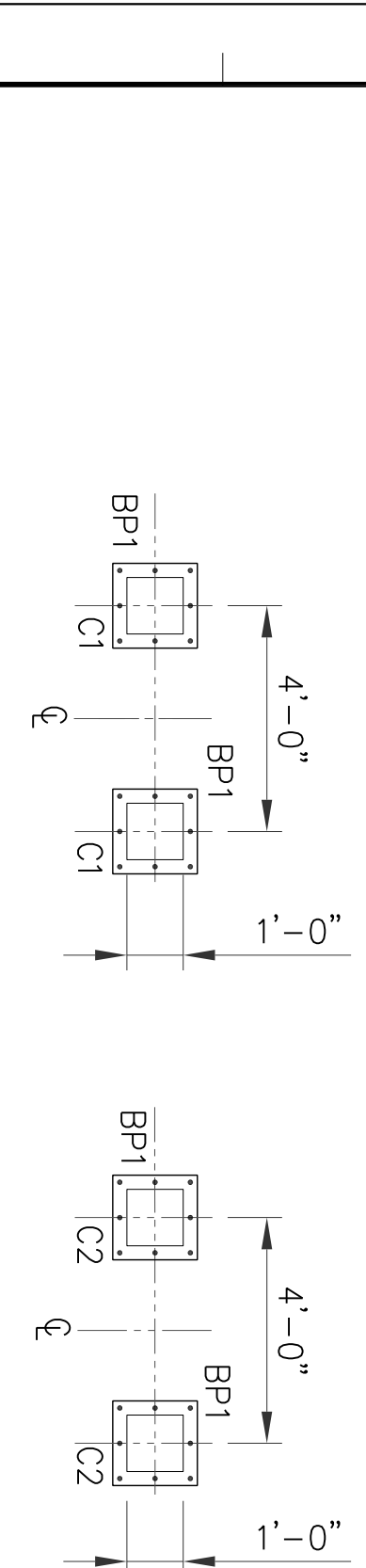


ELEVATION B
SCALE: NTS, REF. DWG. 2

ELEVATION A
SCALE: NTS, REF. DWG. 2

ELEVATION B
SCALE: NTS, REF. DWG. 2

ELEVATION B
SCALE: NTS, REF. DWG. 2



COLUQMN	SECTION	BEAM	SECTION
C1	HSS12X12X5/16(TYP)	B1	HSS12X12X5/16(TYP)
C2	HSS12X12X5/16(TYP)	B2	HSS12X12X5/16(TYP)
C3	SEE SHEET NO. 4		
C4	SEE SHEET NO. 4		

REF. DRAWINGS

DESCRIPTION

DWG. NO.

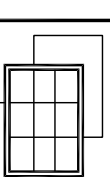
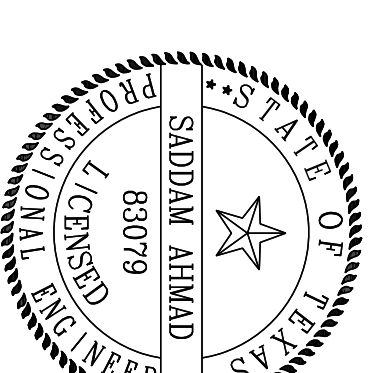
SHEET NO. 2

SHAHEED MINAR PLAN VIEW

NO.	BY	DATE	REVISION
0	NH	06/29/10	APPROVED FOR CONSTRUCTION
1	NH	05/20/10	REVISED FOR APPROVAL
2	MSJ	03/09/10	ISSUED FOR APPROVAL

NO.	BY	DATE	REVISION
0	MTS	06/29/10	
1	MTS	05/20/10	
2	MH	03/09/10	

NO.	BY	DATE	REVISION
0	CHKD.	DATE	



ENGINEERING ALLIANCE INC.
F-10447

DATE: 06/29/10
STRUCTURAL DESIGNER: Engineering Alliance Inc.
PROJECT NO: BAC10003

MAHS

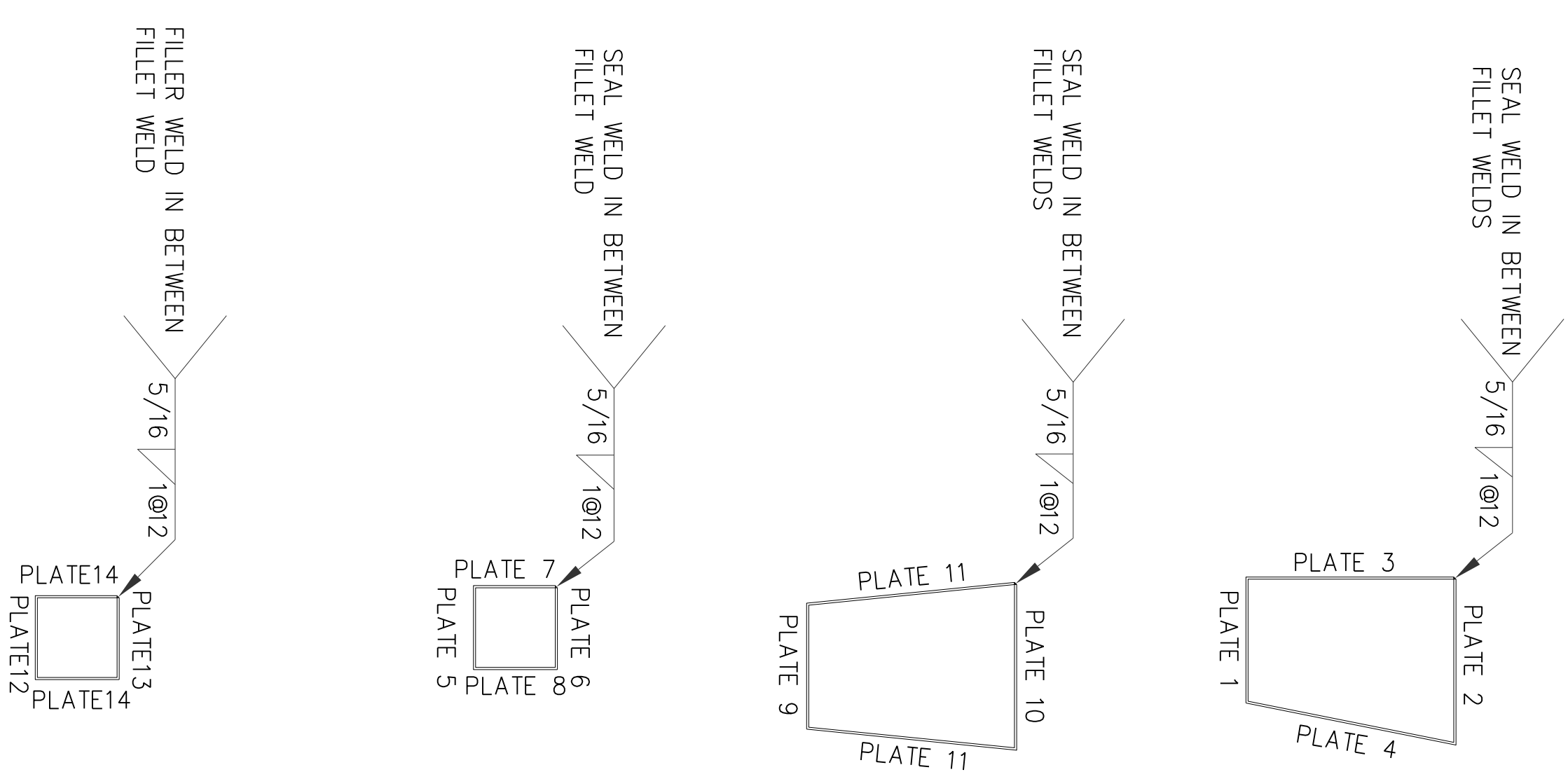
BANGLADESH AMERICAN CENTER

SHAHEED MINAR ELEVATION VIEW

SCALE: N.T.S.
DWG. SHEET: 3 OF 8

NOTES:
1. FOR GENERAL NOTES SEE SHEET 1

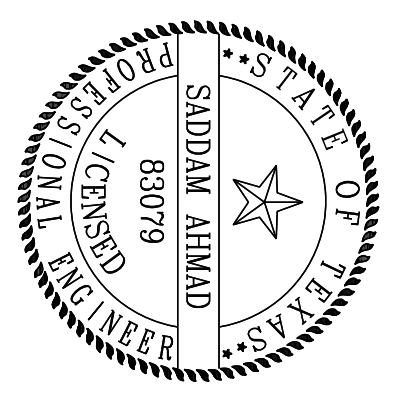
COLUMN SCHEDULE	
COLUMN	BOTTOM OF BASE PLATE AT ELEV. 0'
C1	AT ELEV. 14'-6 1/2"
C2	AT ELEV. 18'-5 1/2"
	AT ELEV. 21'-8 1/2"
	AT ELEV. 28'-9 9/16"
C1	TS12X12X5/16
C2	TS12X12X5/16
C2	TS12X12X5/16
C2	TS12X12X5/16
C3 WITH PLATE IDENTITY	
C3 WITH PLATE IDENTITY	
C3 WITH PLATE IDENTITY	
C3 WITH PLATE IDENTITY	
C4 WITH PLATE IDENTITY	
C4 WITH PLATE IDENTITY	
C4 WITH PLATE IDENTITY	
C4 WITH PLATE IDENTITY	



REF. DRAWINGS

DWG. NO.	DESCRIPTION
SHAHEED MINAR ELEVATION VIEW	

NO.	BY	DATE	REVISION
0	NH	06/29/10	APPROVED FOR CONSTRUCTION
1	NH	05/20/10	REVISED FOR APPROVAL
2	MSJ	03/09/10	ISSUED FOR APPROVAL



ENGINEERING ALLIANCE INC.
F-10447

DRAWN BY: MAHS DATE: 06/29/10 STRUCTURAL USER: Engineering Alliance Inc. PROJECT NO: BAC10003 REVISION: 0	SHAHEED MINAR COLUMN SCHEDULE	W/O. NO.: SCALE: N.T.S. DWG. SHEET: 4 OF 8
---	--	--

NOTES:
1. FOR GENERAL NOTES SEE SHEET 1

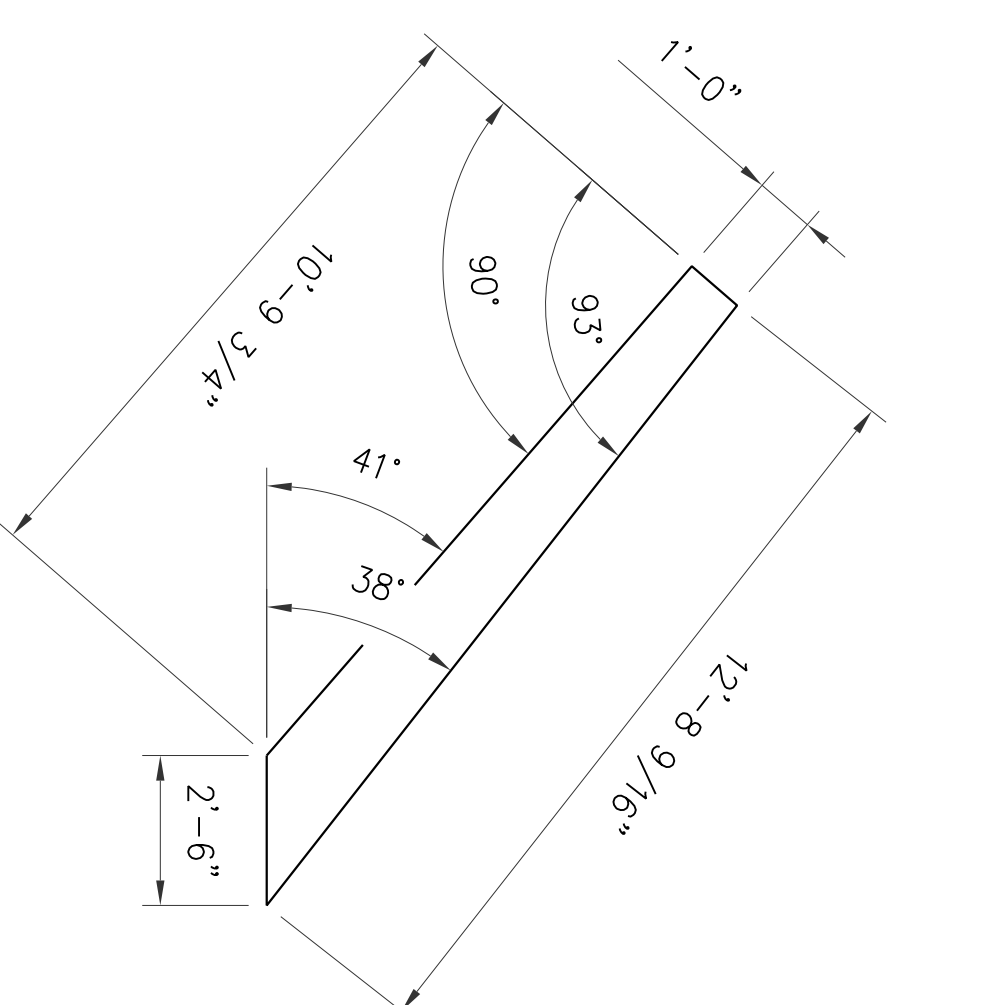
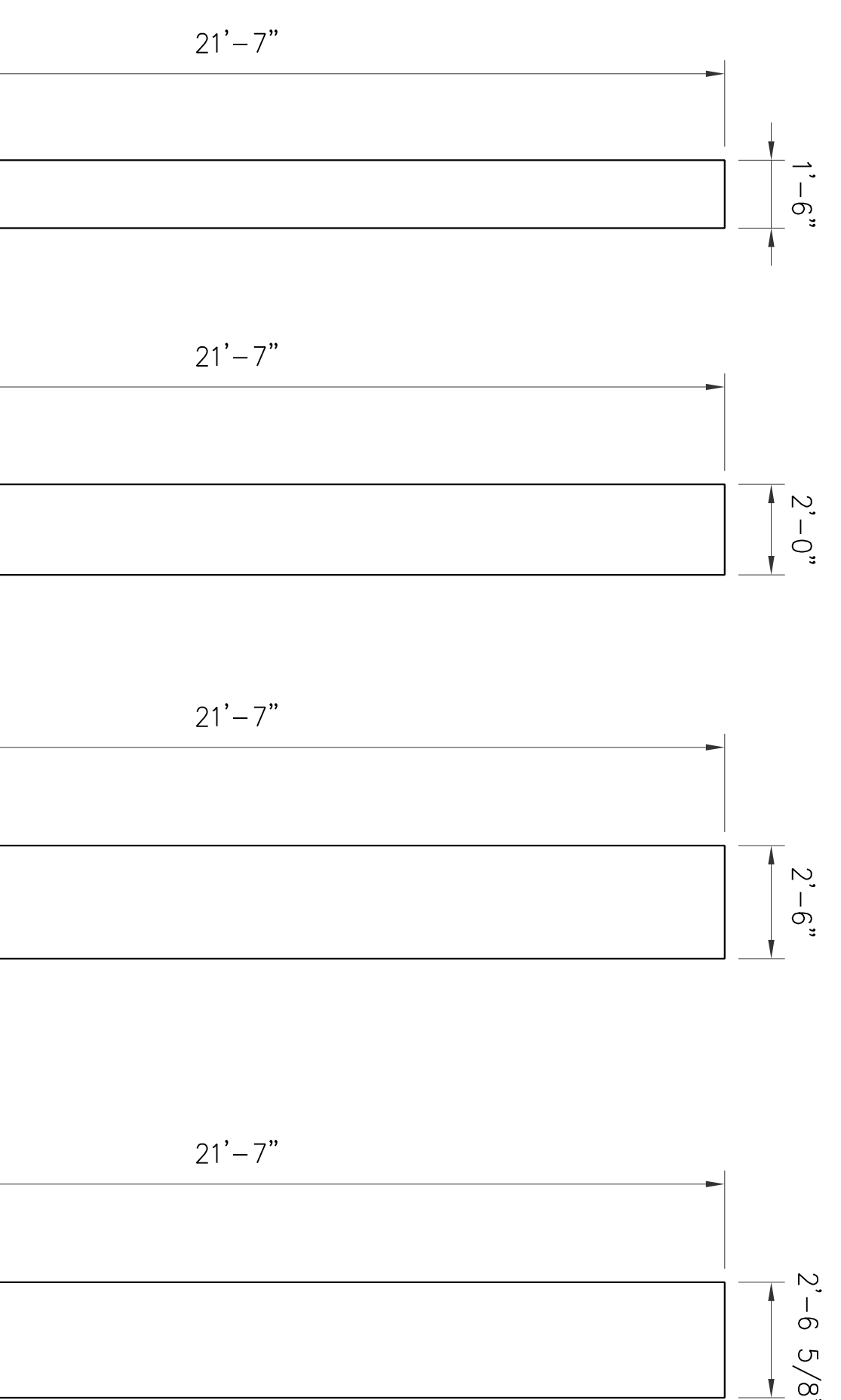


PLATE 7
(2 REQUIRED)

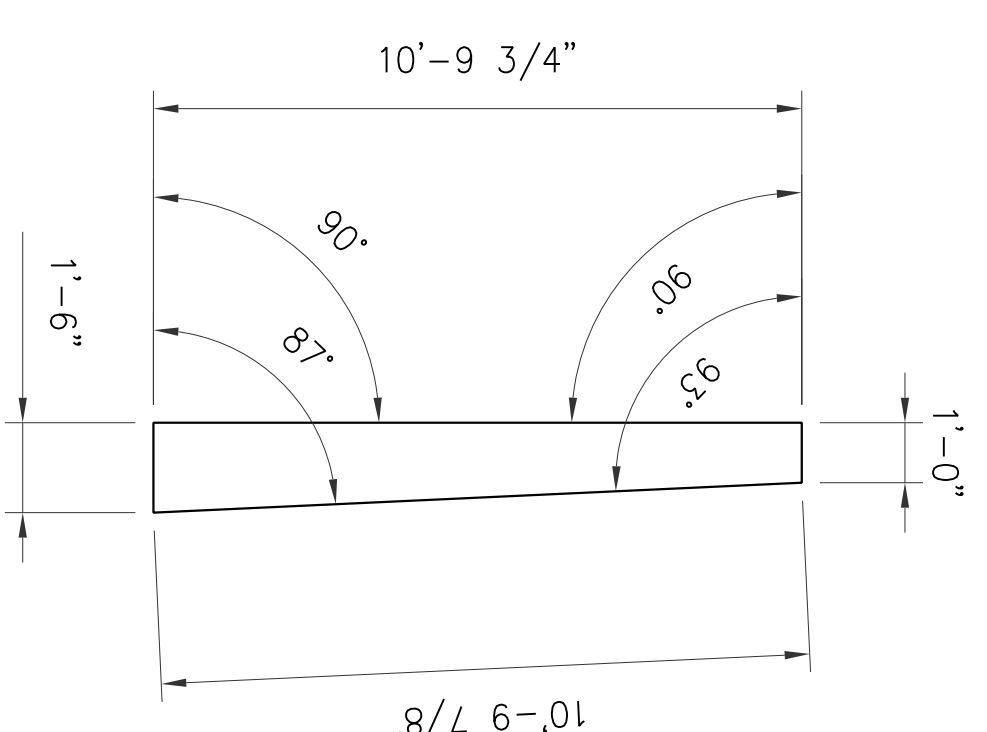


PLATE 5
(2 REQUIRED)

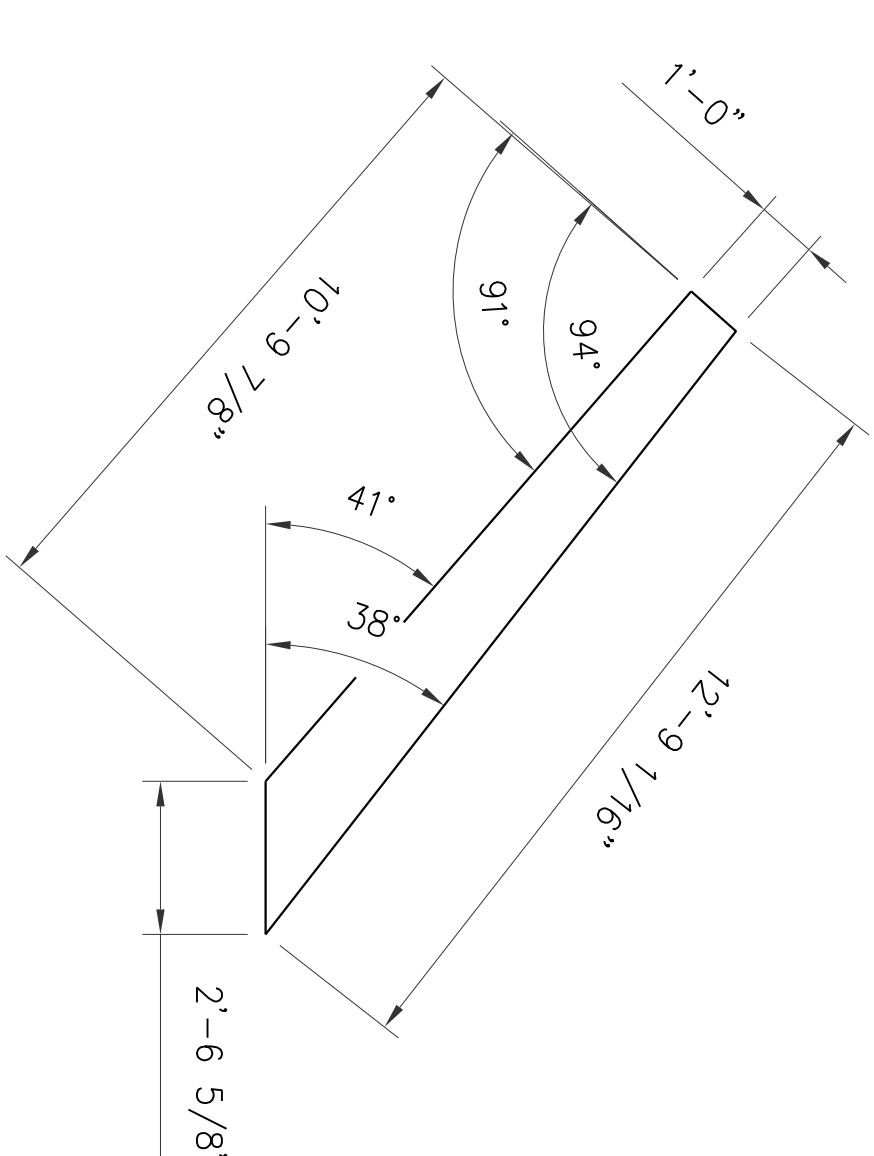


PLATE 8
(2 REQUIRED)

REQUIRED PLATE DIMENSIONS FOR COLUMN C3

PLATE 1
(2 REQUIRED)

PLATE 2
(2 REQUIRED)

PLATE 3
(2 REQUIRED)

PLATE 4
(2 REQUIRED)

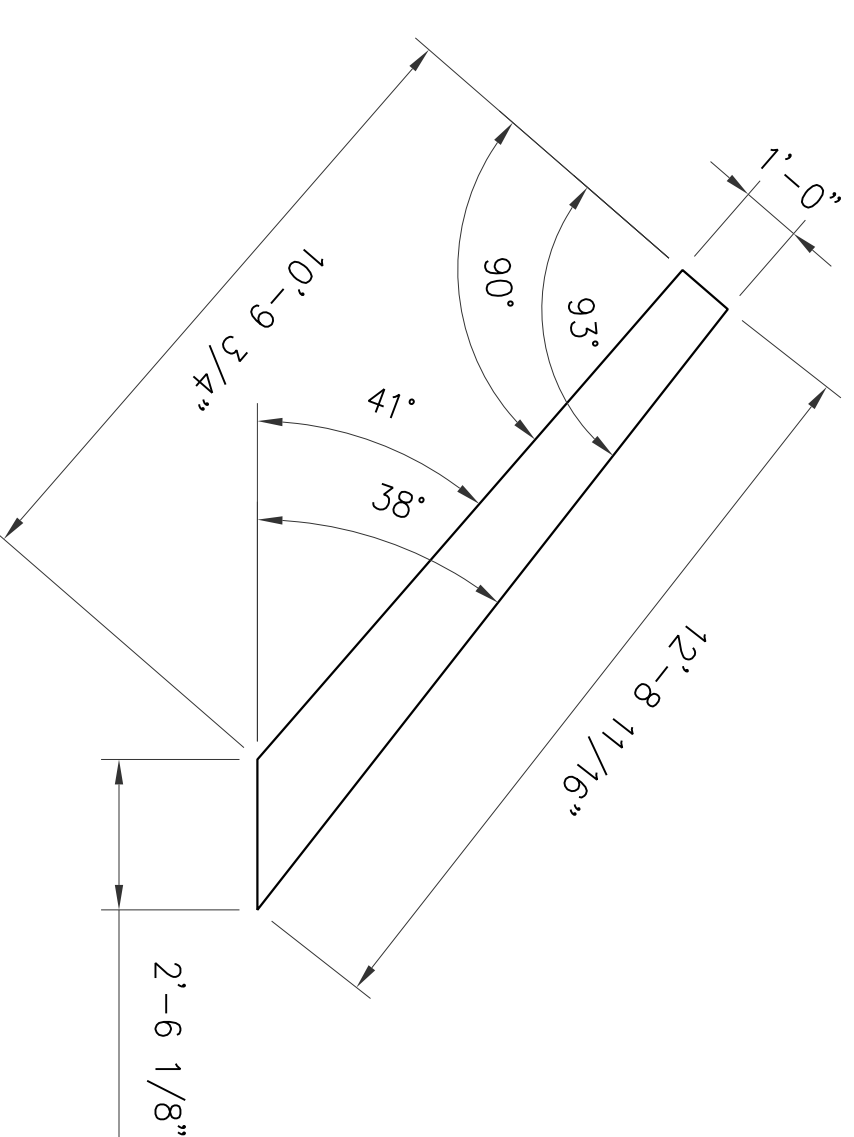
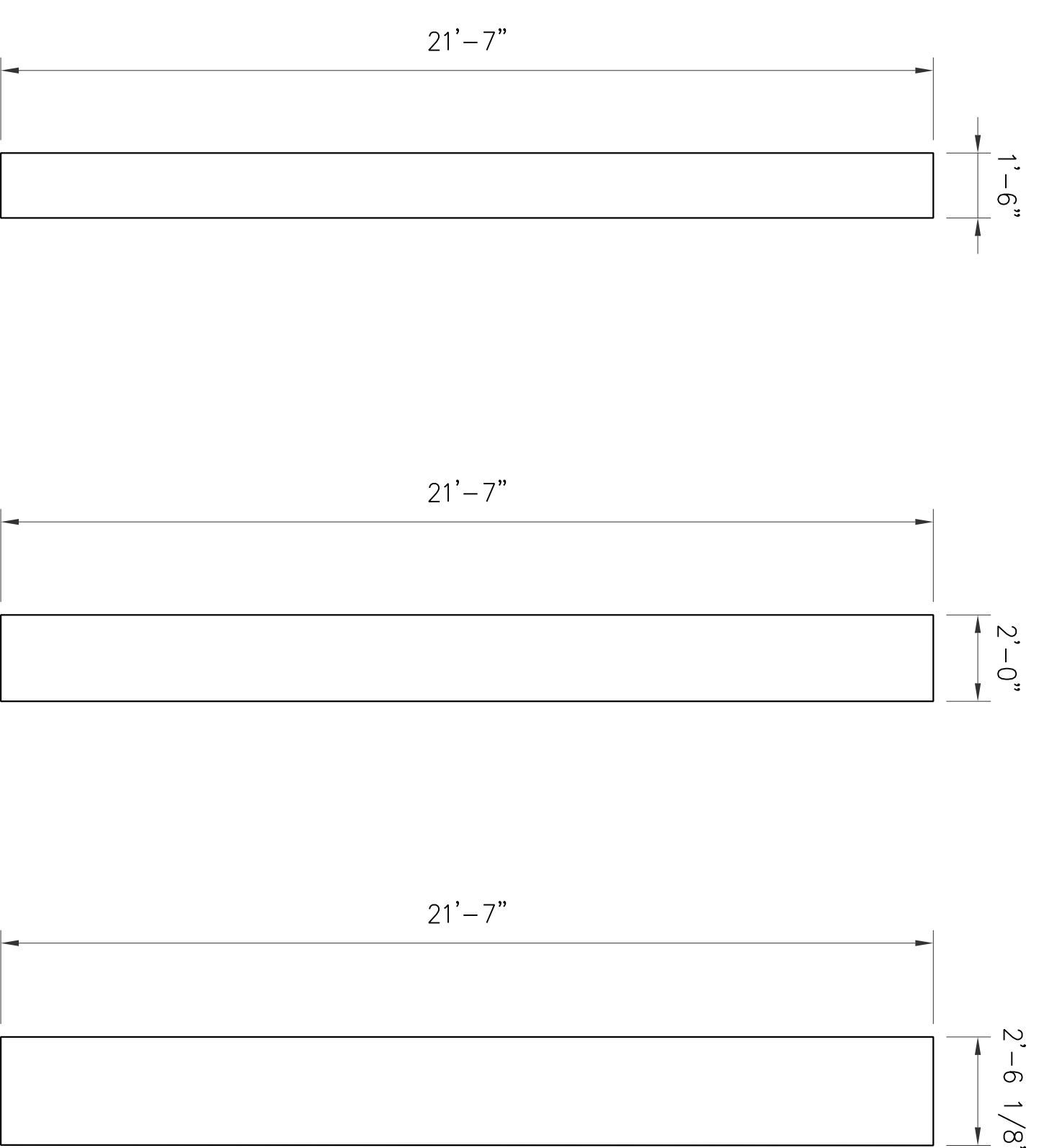


PLATE 14
(2 REQUIRED)

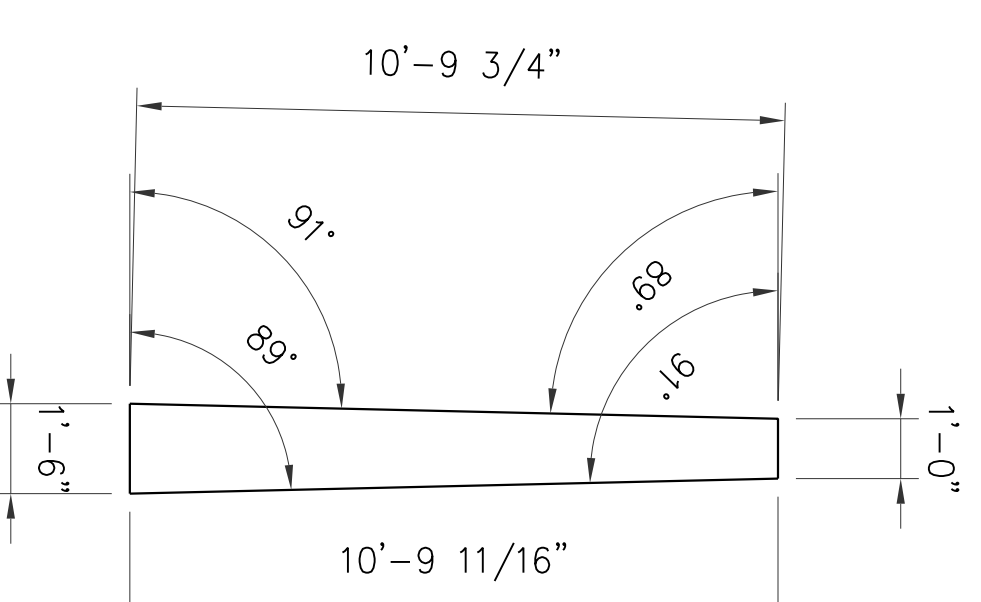


PLATE 12

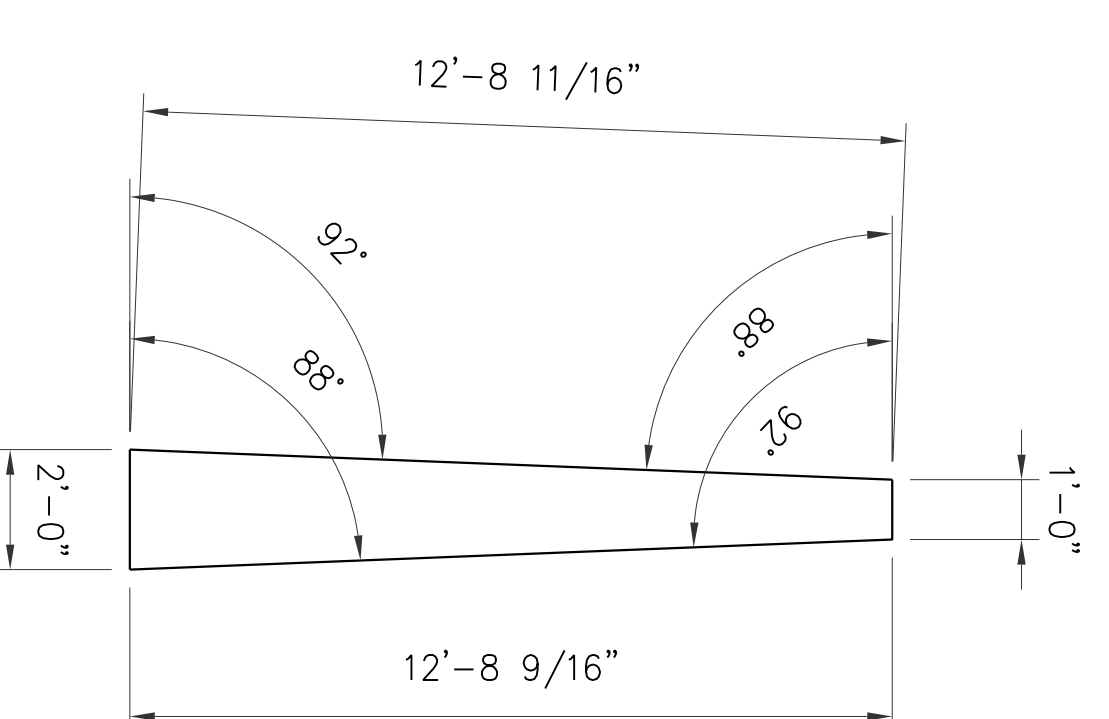


PLATE 13

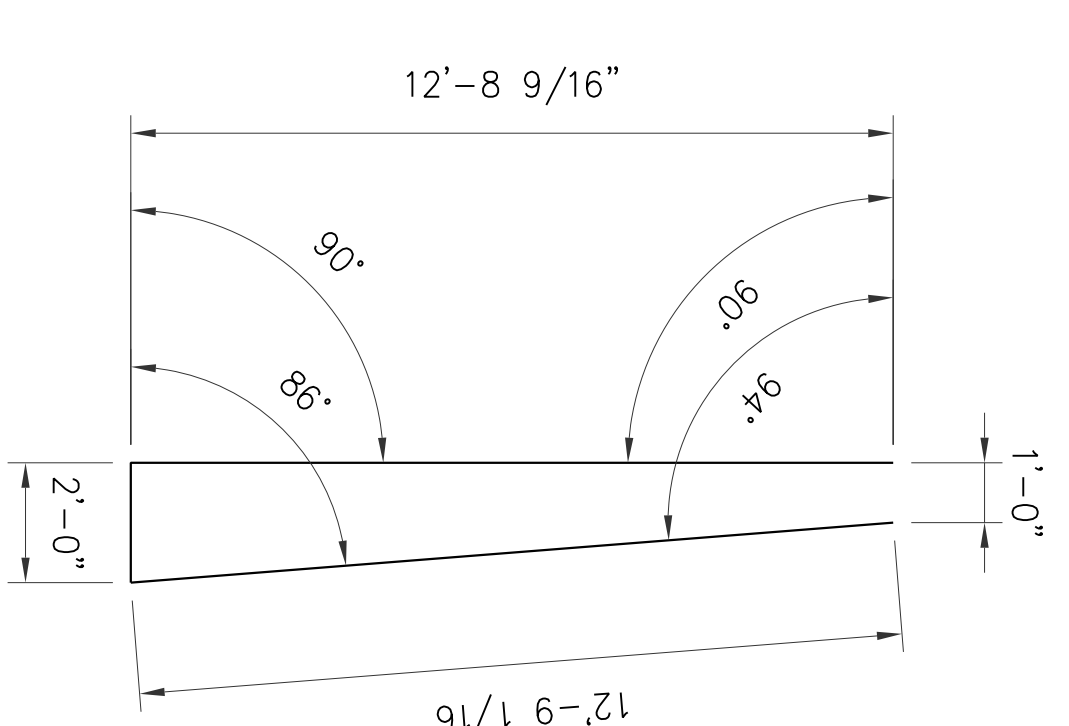


PLATE 6
(2 REQUIRED)

REQUIRED PLATE DIMENSIONS FOR COLUMN C4

PLATE 9

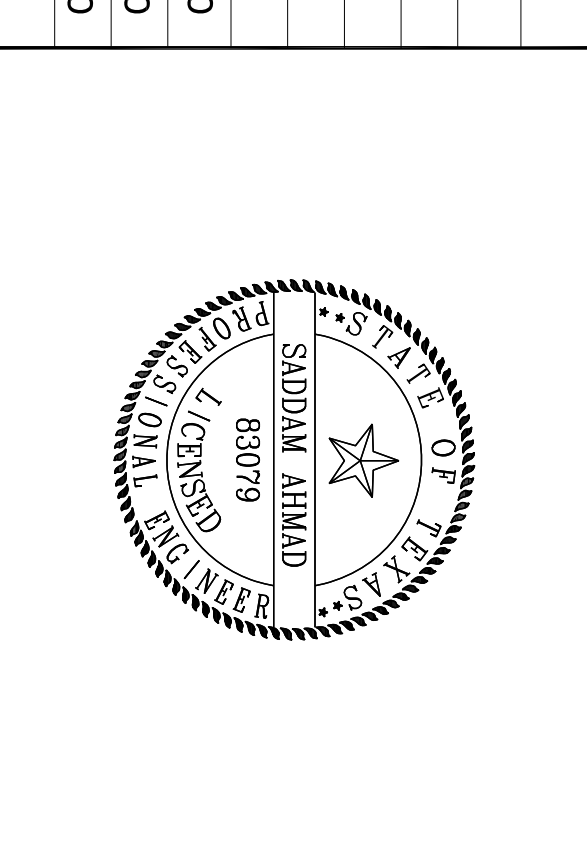
PLATE 10

PLATE 11
(2 REQUIRED)

REF. DRAWINGS

DWG. NO.	DESCRIPTION
SHEET NO. 3	SHAHEED MINAR ELEVATION VIEW
SHEET NO. 4	COLUMN SCHEDULE

NO.	BY	DATE	REVISION
0	NH	06/29/10	APPROVED FOR CONSTRUCTION
B	NH	05/20/10	REVISED FOR APPROVAL
A	MSJ	03/09/10	ISSUED FOR APPROVAL

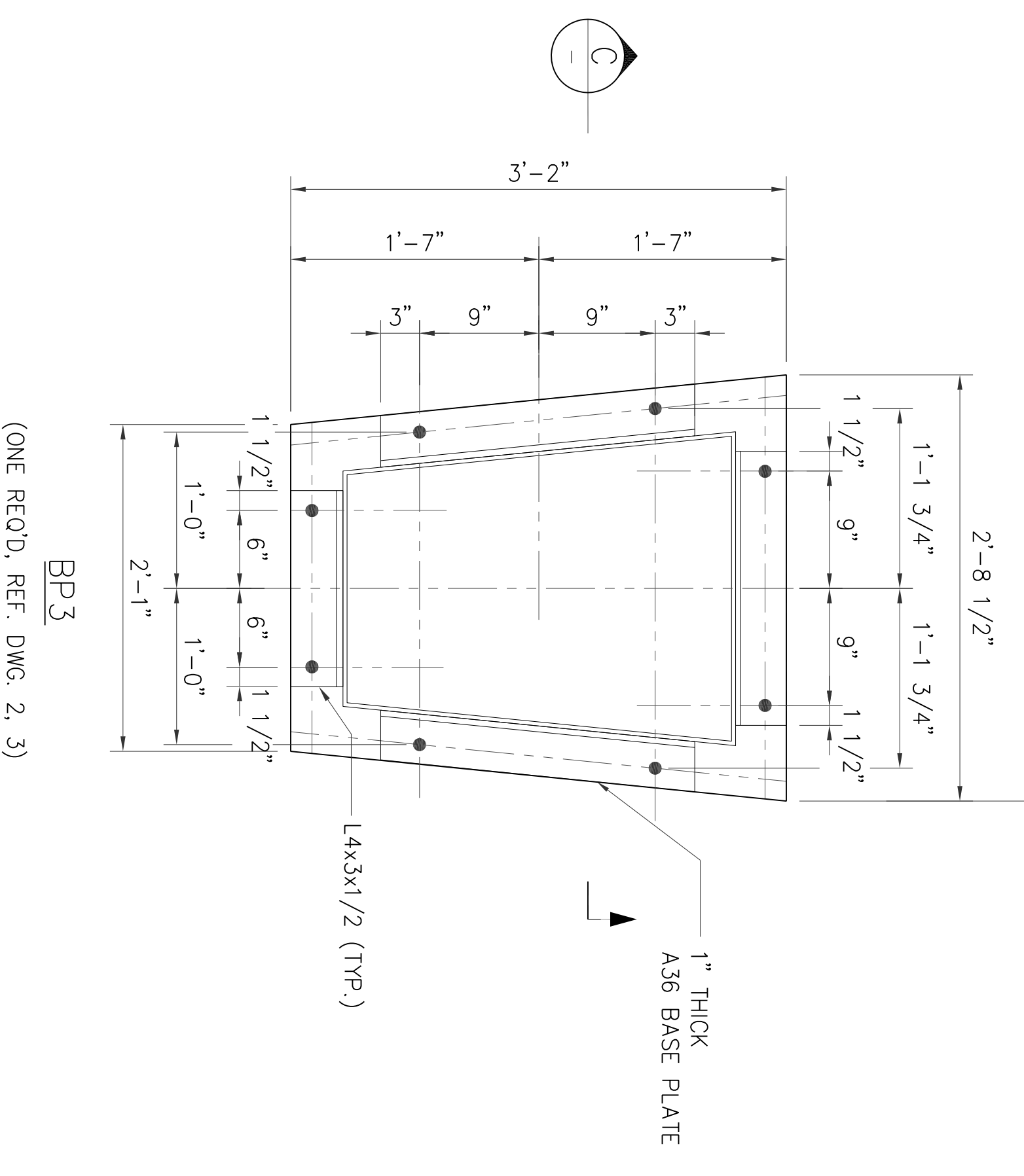
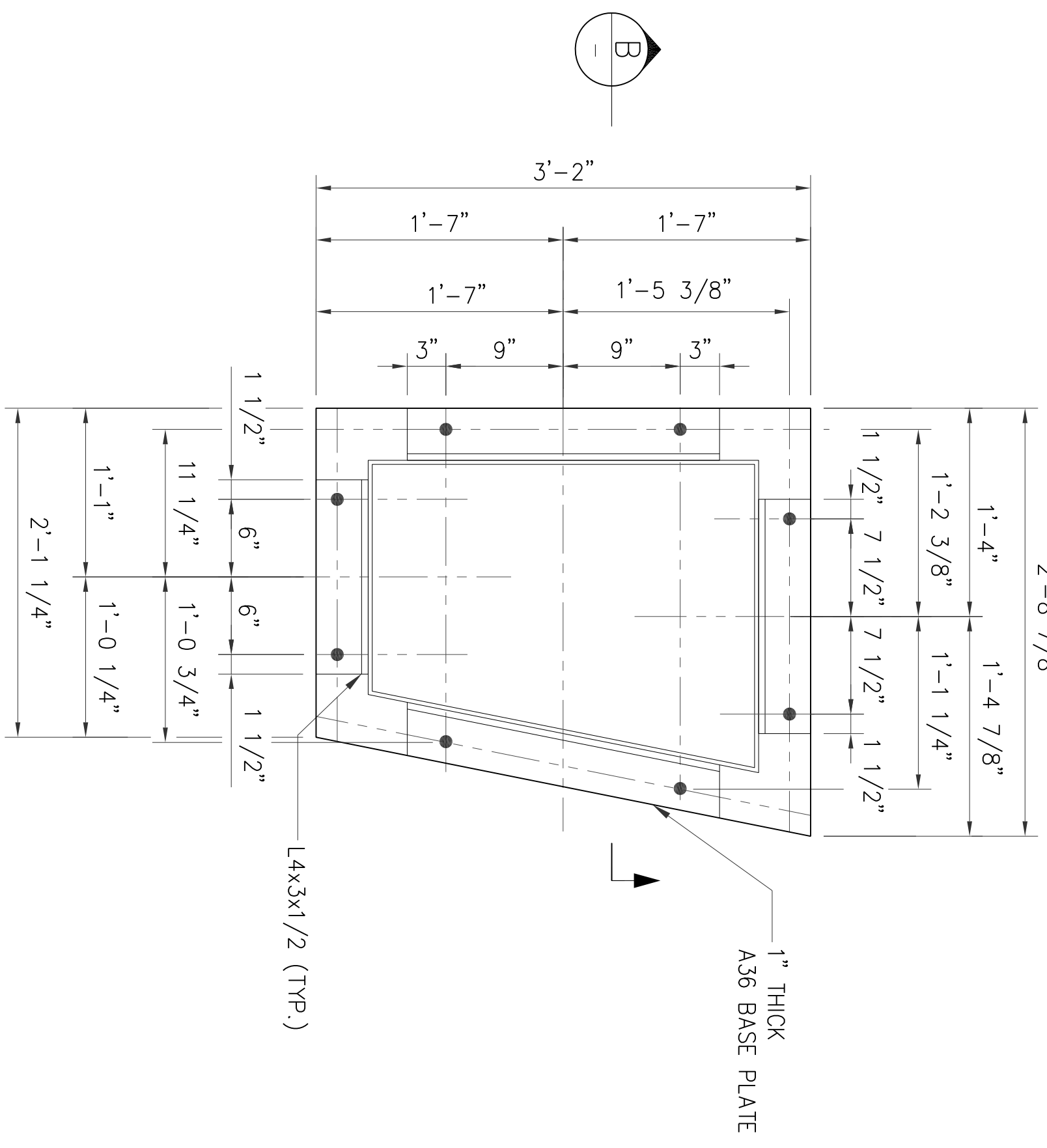
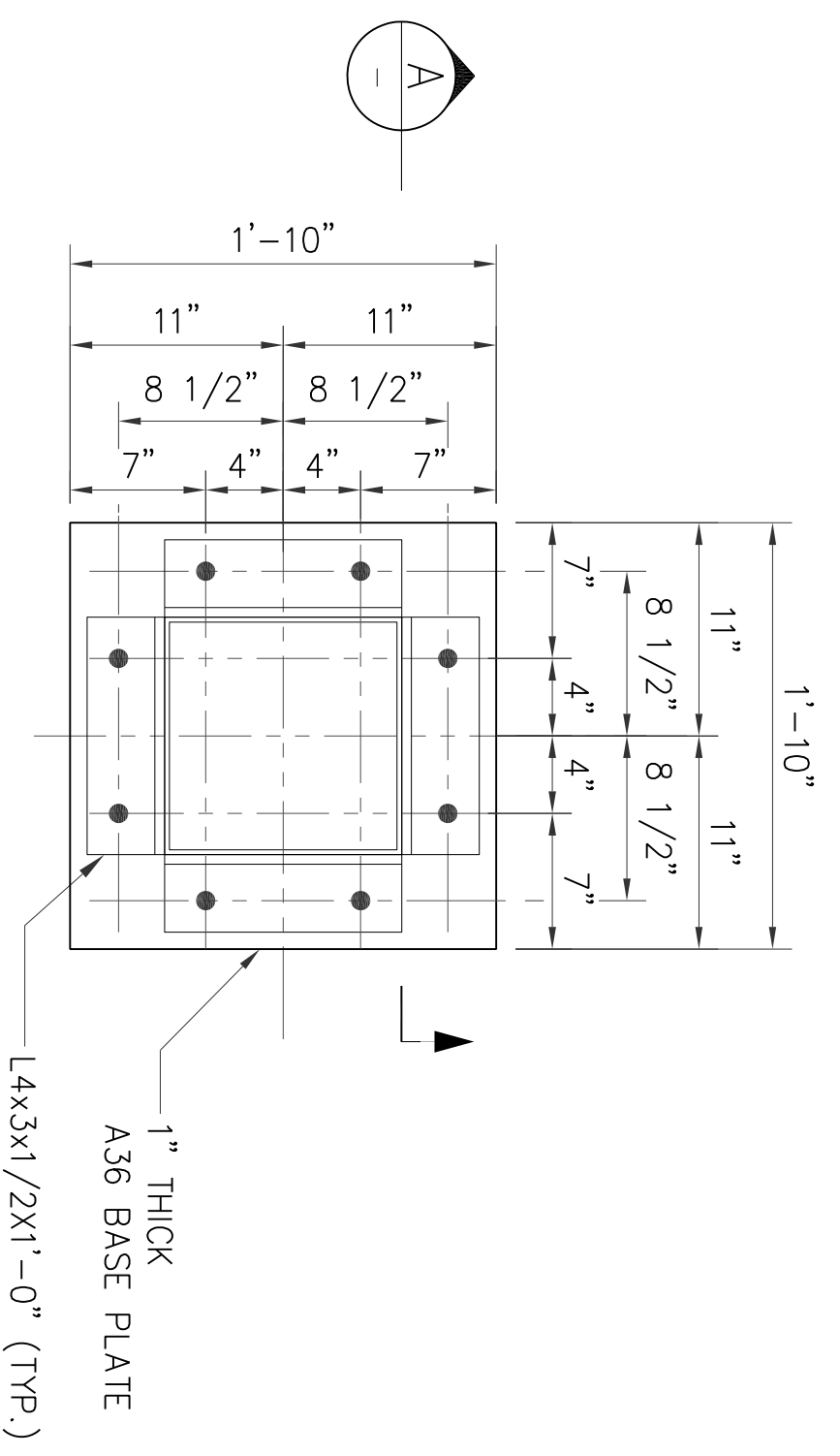
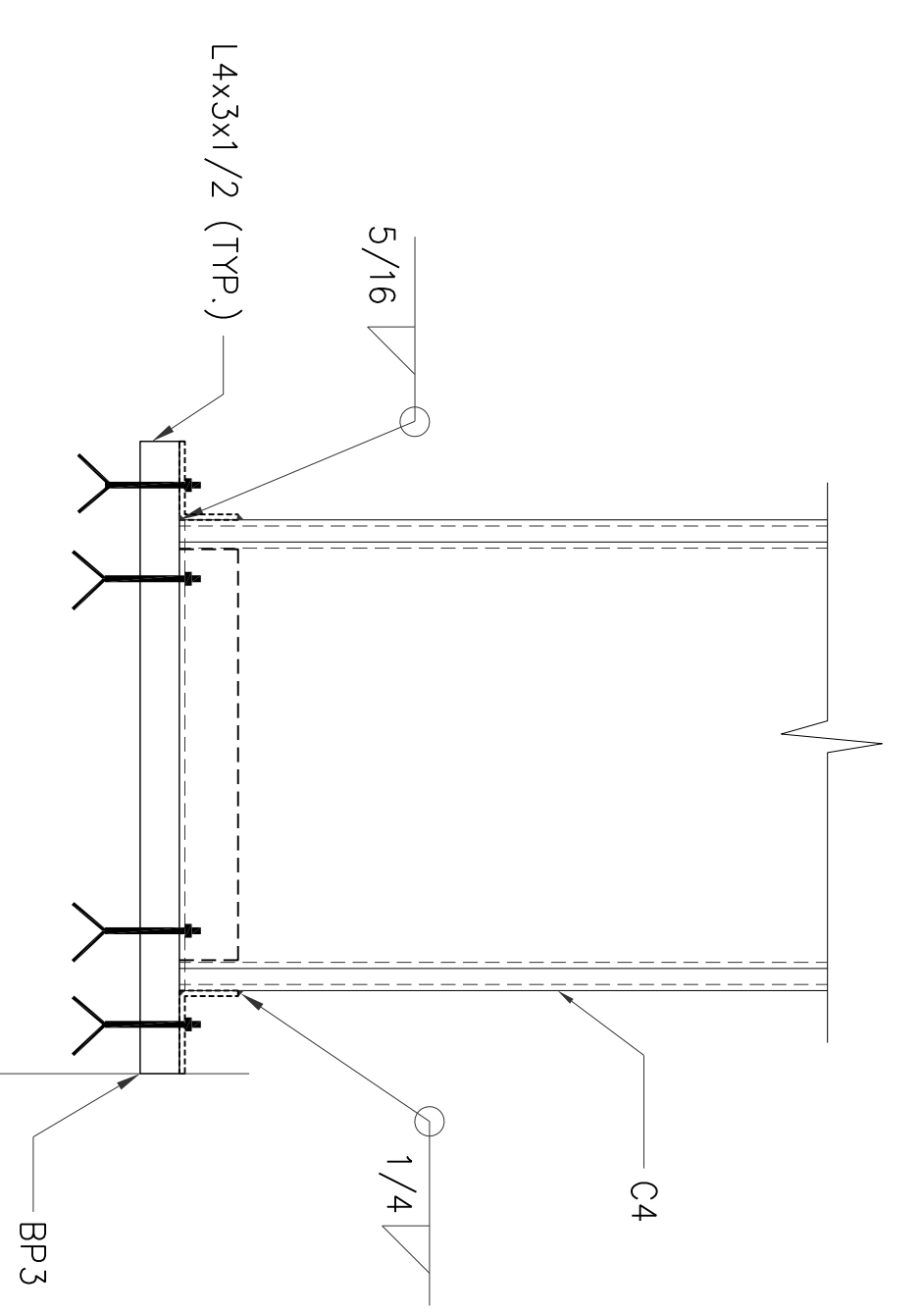
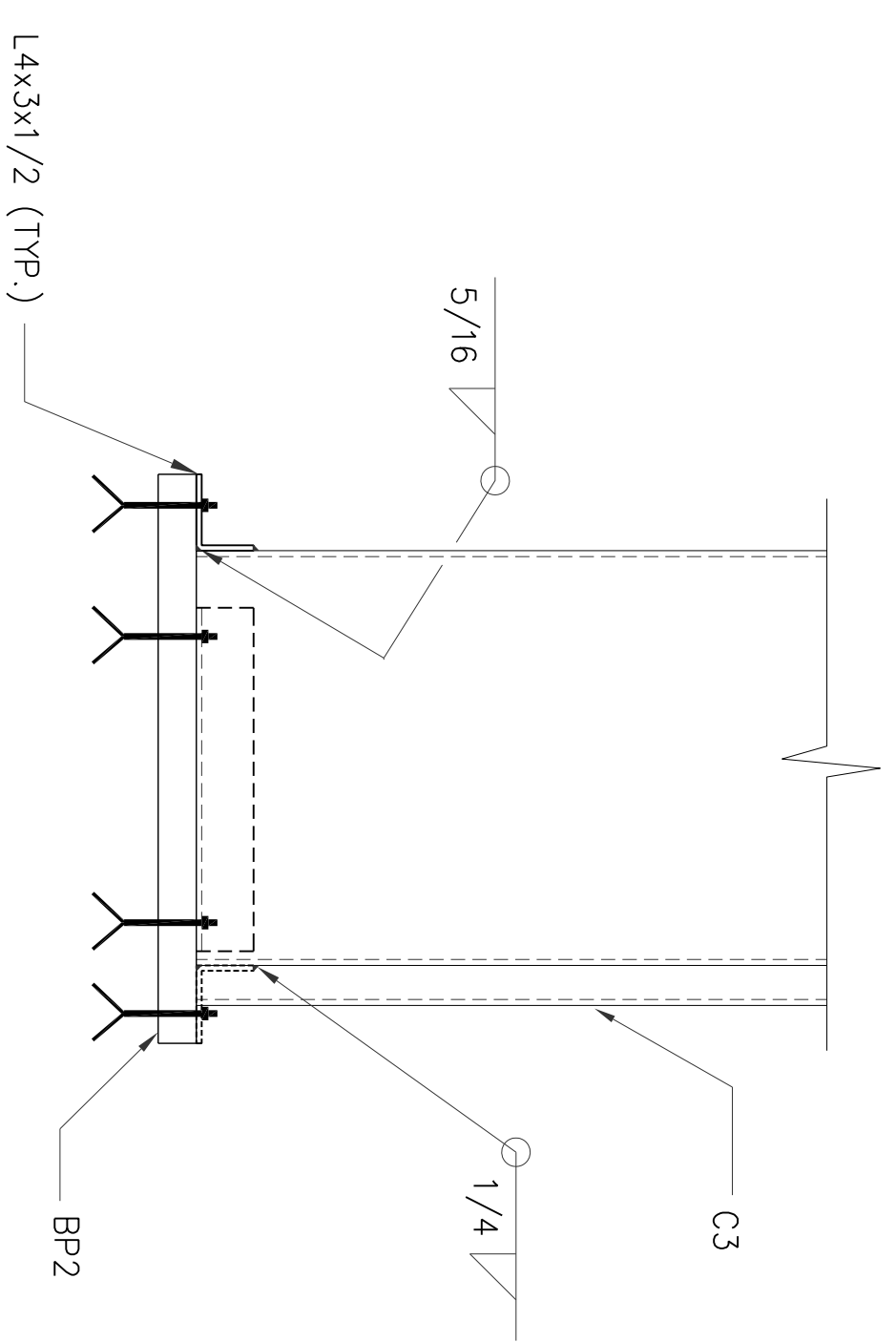
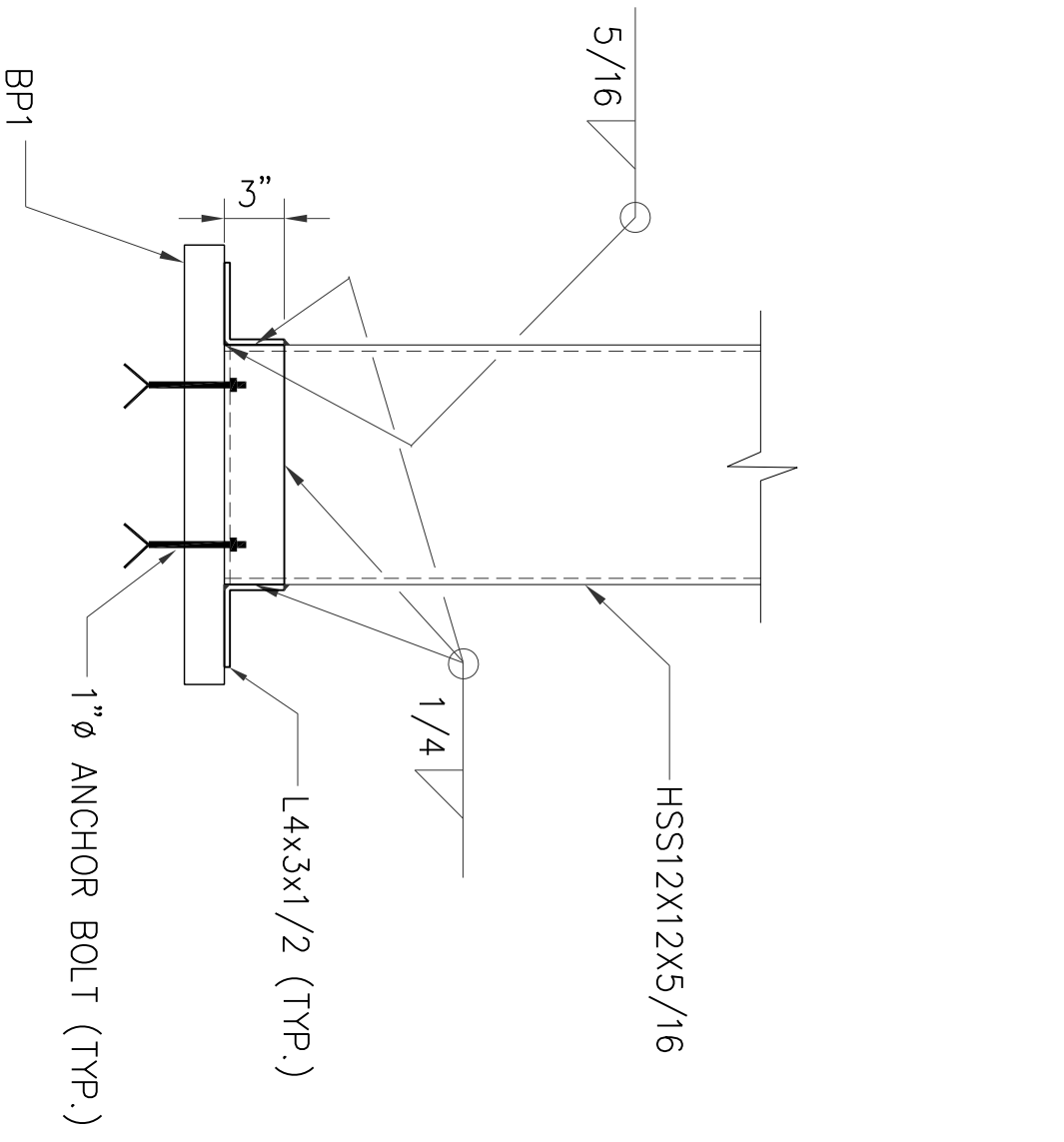


ENGINEERING ALLIANCE INC.
F-10447

BANGLADESH AMERICAN CENTER
SHAHEED MINAR
COLOUMN PLATE DETAILS

DATE: 06/29/10
PROJECT NO: BAC10003
SCALE: N.T.S.
SHEET: 5 OF 8

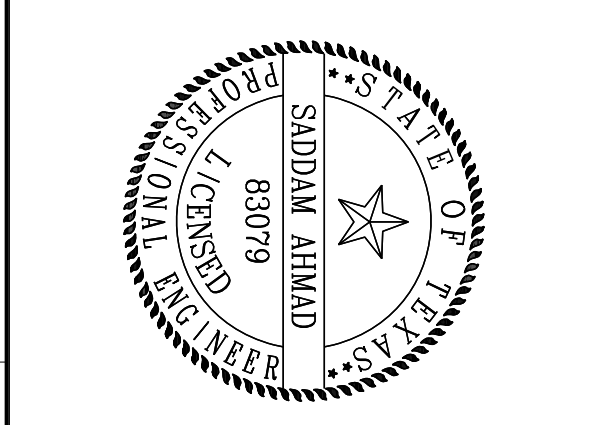
- NOTES:**
- FOR GENERAL NOTES SEE SHEET 1
 - ALL HOLES ARE 1 1/2" DIA. (UNO.)



REF. DRAWINGS

DWG. NO.	DESCRIPTION
SHEET NO. 2	SHAHEED MINAR PLAN VIEW
SHEET NO. 3	SHAHEED MINAR ELEVATION VIEW

NO.	BY	DATE	REVISION
0	NH	06/29/10	APPROVED FOR CONSTRUCTION
B	NH	05/20/10	REVISED FOR APPROVAL
A	MSJ	03/09/10	ISSUED FOR APPROVAL



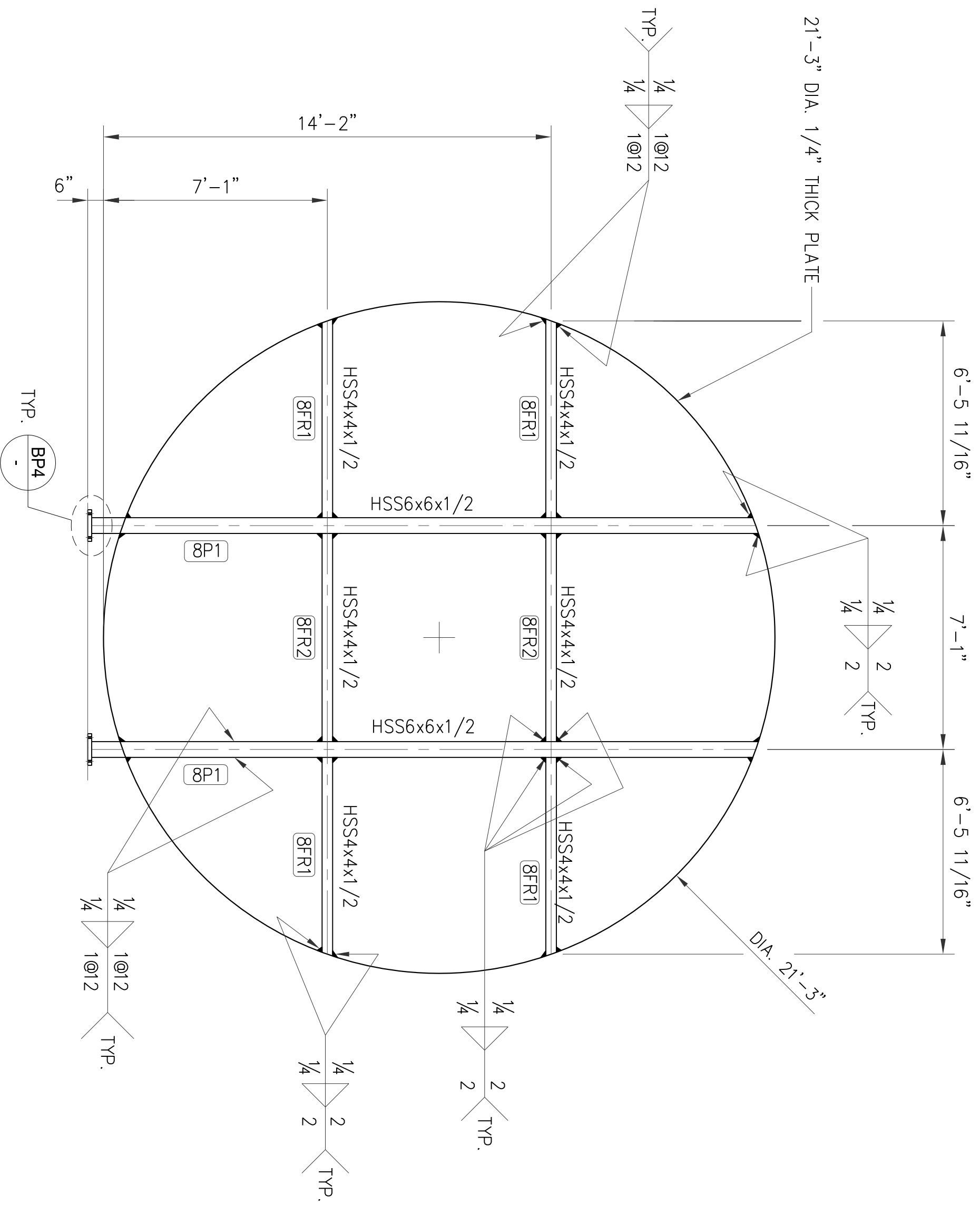
ENGINEERING ALLIANCE INC.
F-10447

BANGLADESH AMERICAN CENTER

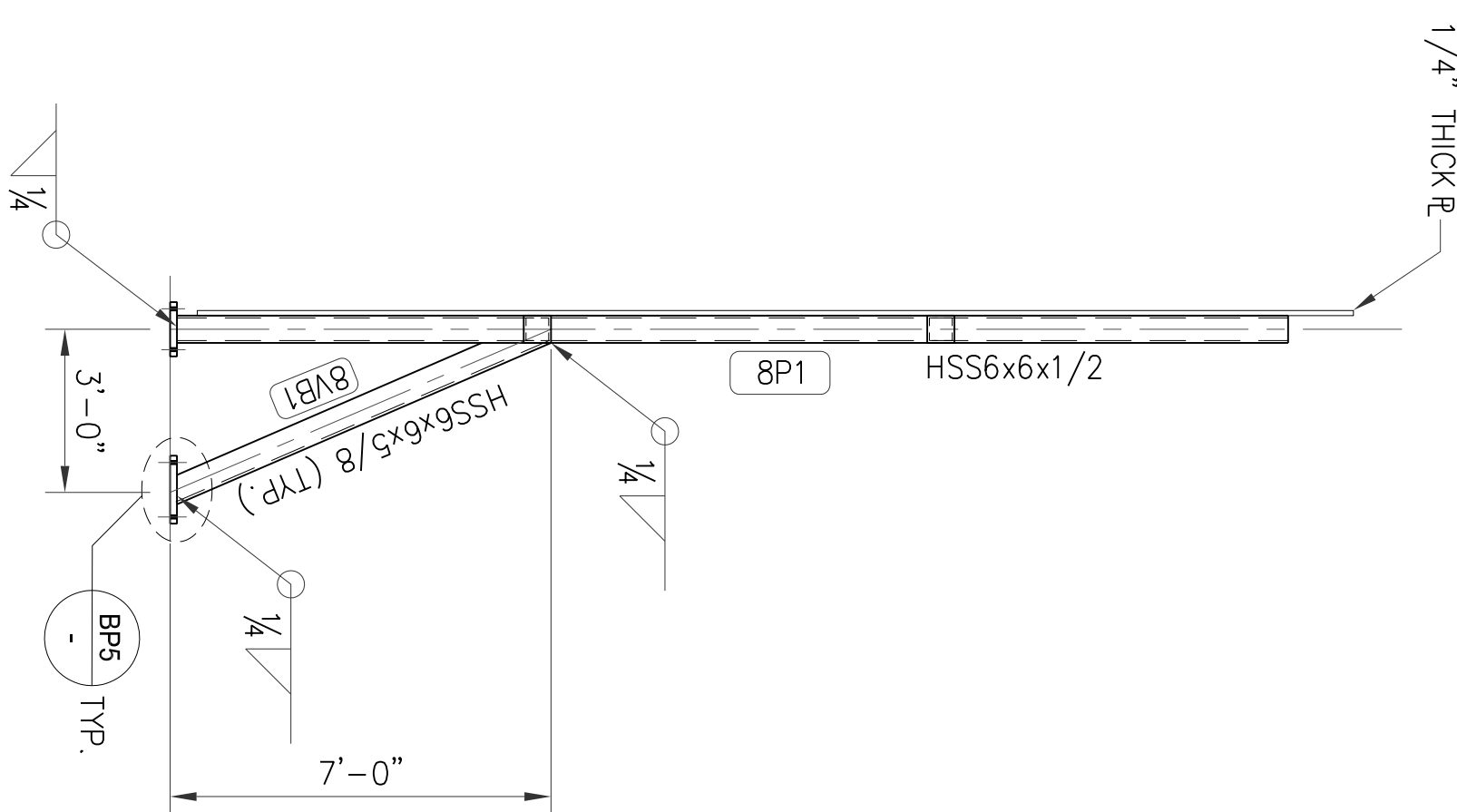
**SHAHEED MINAR
BASE PLATE DETAIL**

OWNER:	DATE:	STRUCTURAL ENGINEER:	PROJECT NO.:
MAHS	06/29/10	Engineering Alliance Inc.	BAC10003
REVISION:	0	SCALE:	N.T.S.
W.O. NO.:	---	DWG. SHEET:	6 OF 8

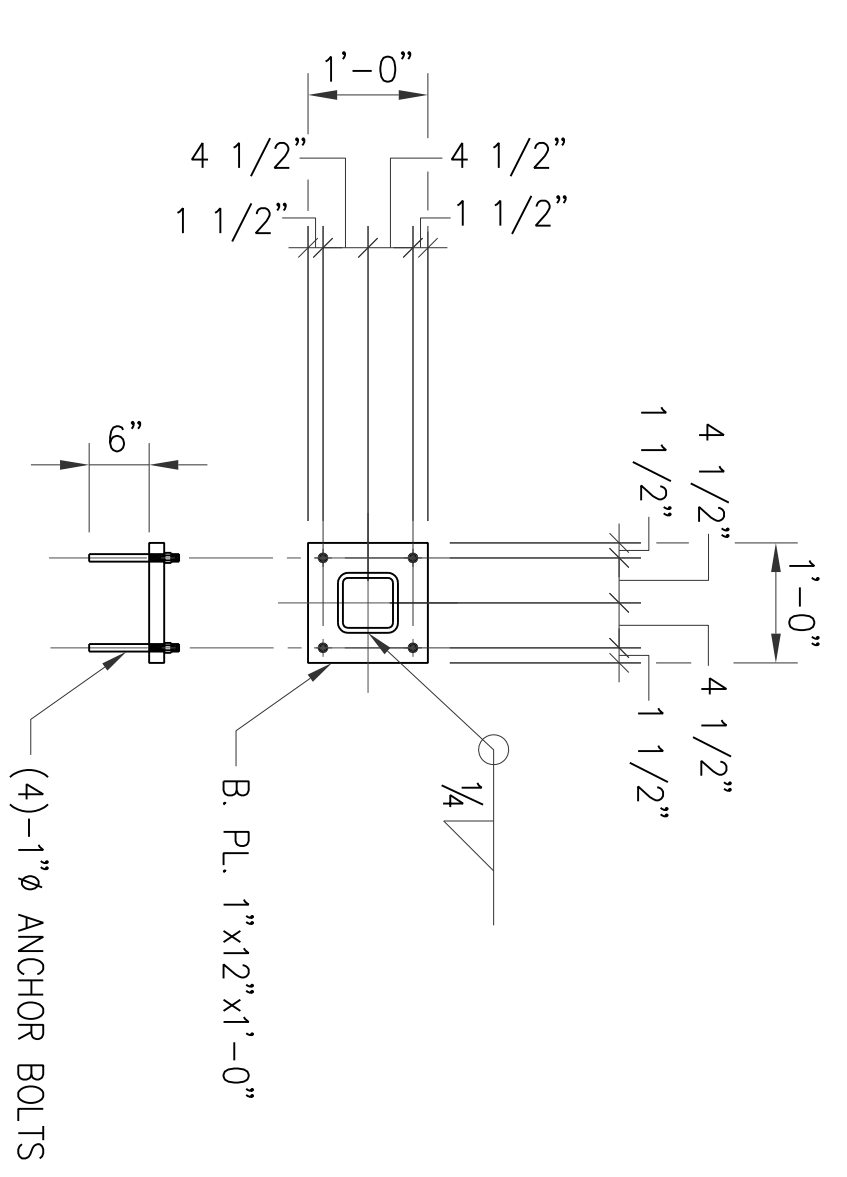
NOTES:
1. FOR GENERAL NOTES SEE SHEET 1



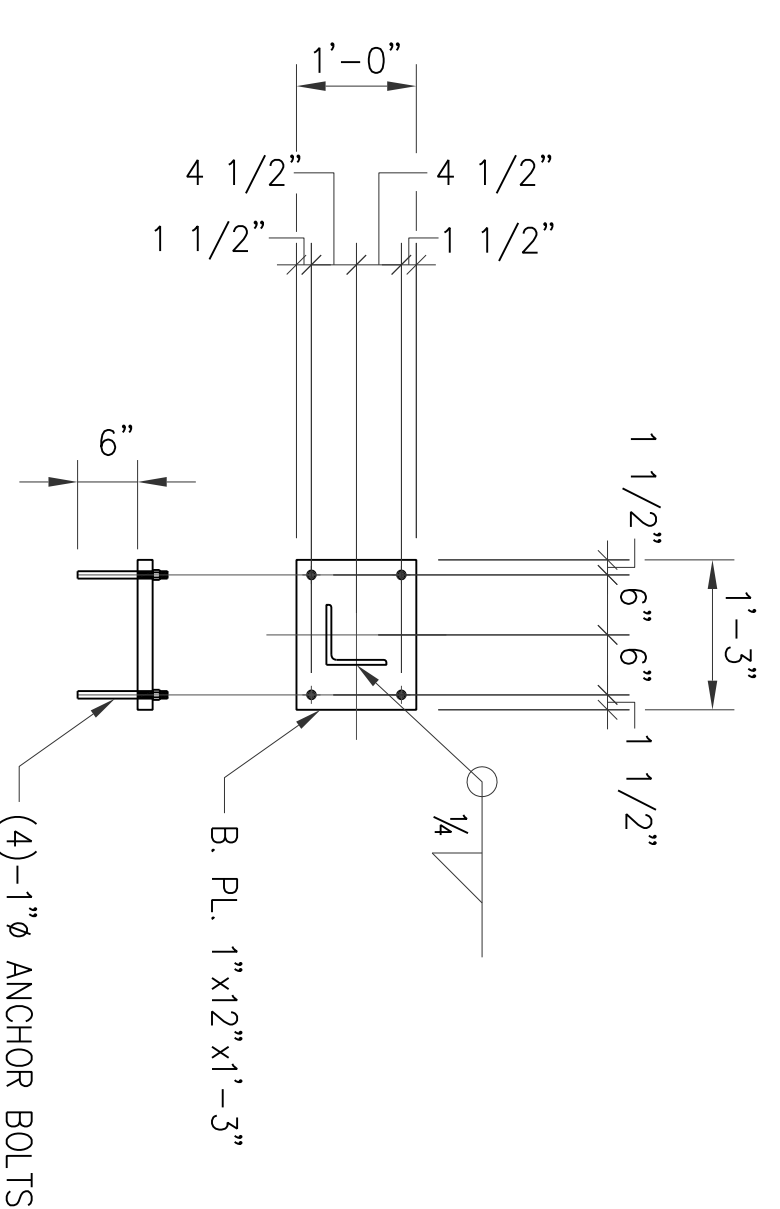
BACK VIEW OF CIRCULAR
SCALE: NTS, REF. DWG. 2



SIDE VIEW



DETAIL - BP4
(2 RECD)

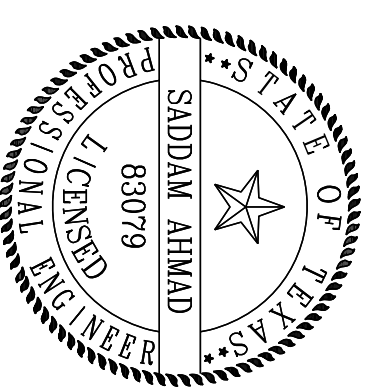


DETAIL - BP5
(2 RECD)

REF. DRAWINGS

DWG. NO.	DESCRIPTION
SHEET NO. 2	SHAHEED MINAR PLAN VIEW
SHEET NO. 3	SHAHEED MINAR ELEVATION VIEW

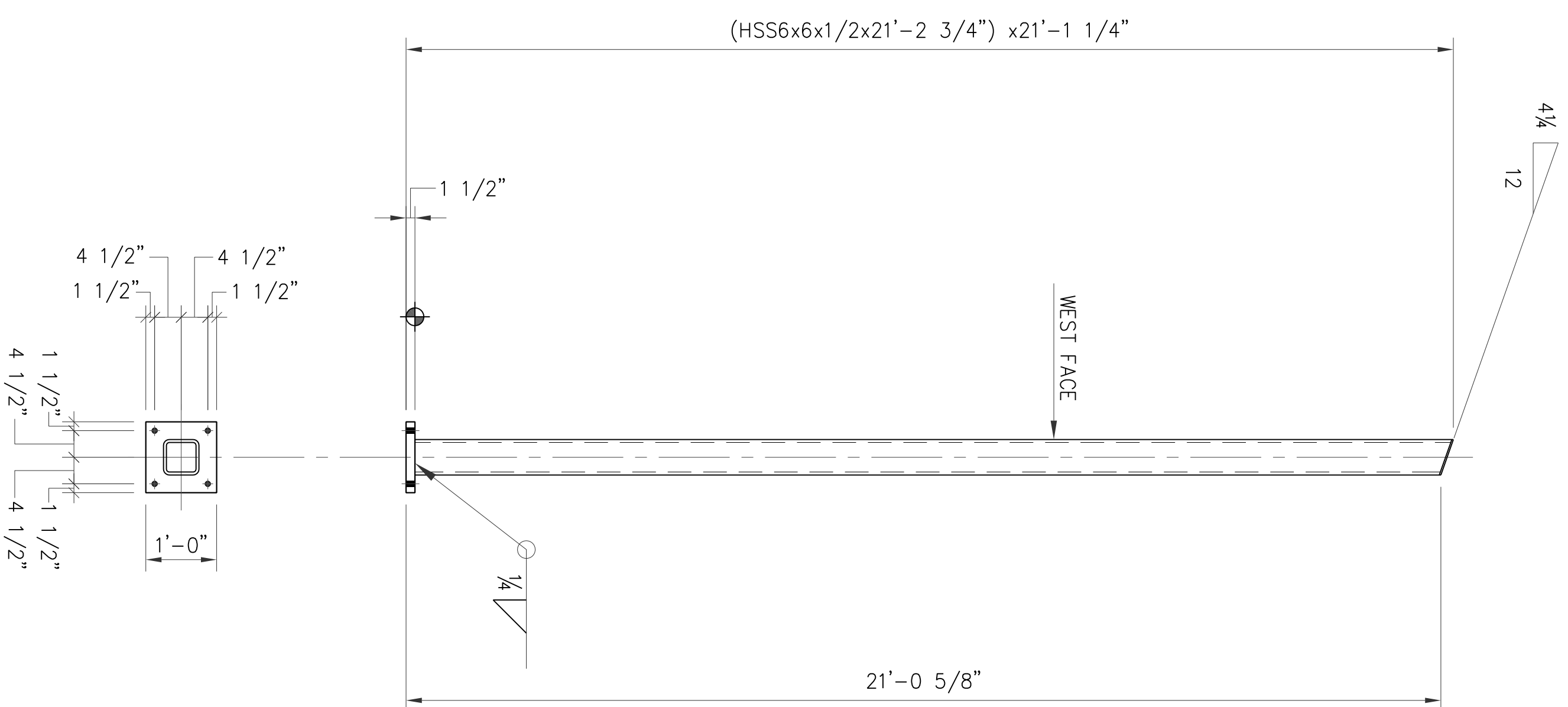
NO.	BY	DATE	REVISION
0	NH	06/29/10	APPROVED FOR CONSTRUCTION
B	NH	05/20/10	REVISED FOR APPROVAL
A	MSJ	03/09/10	ISSUED FOR APPROVAL



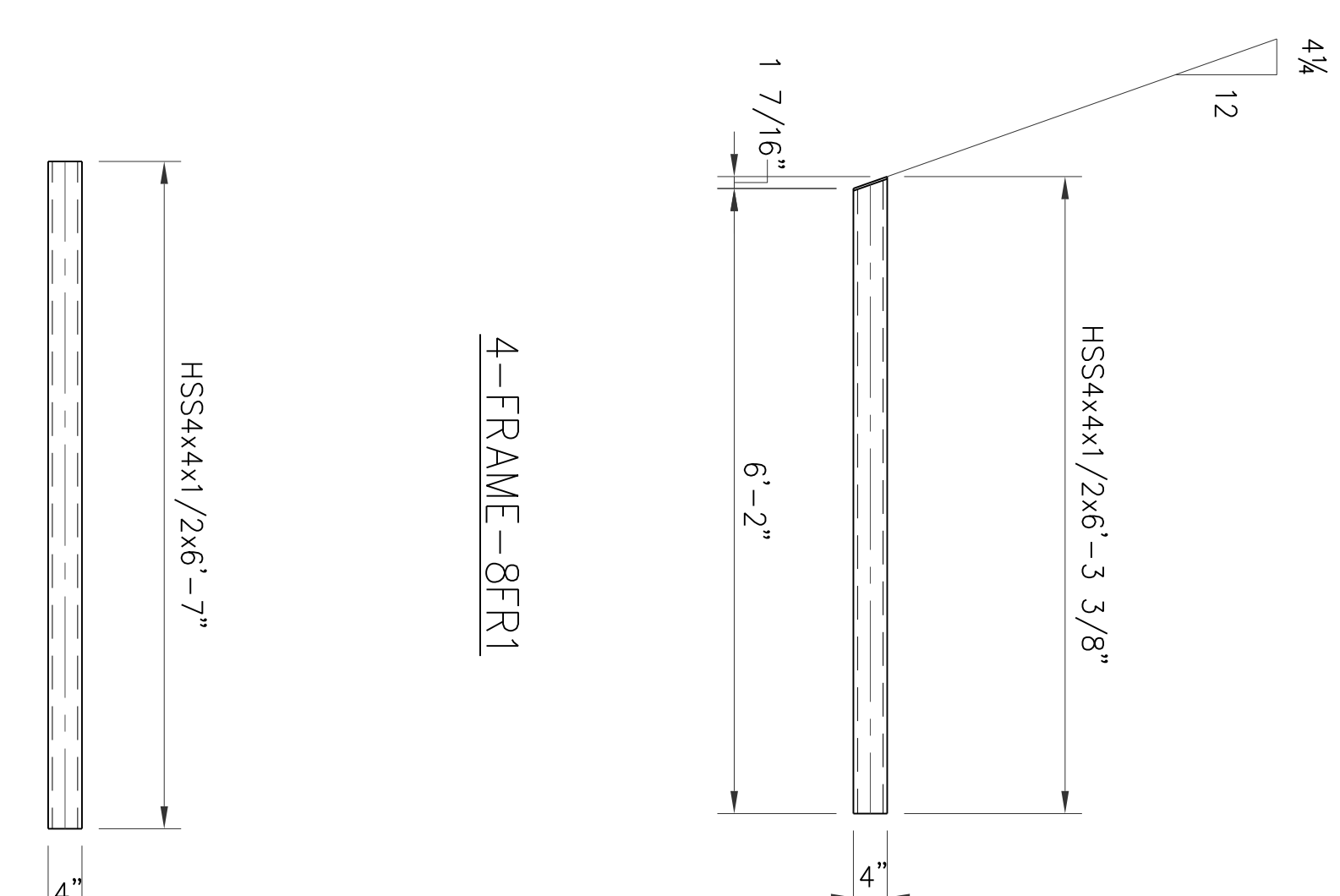
ENGINEERING ALLIANCE INC.
F-10447

ISSUED BY:	DATE:	STRUCTURAL DESIGNER:	PROJECT NO.:
MAHS	06/29/10	Engineering Alliance Inc.	BAC10003
BANGLADESH AMERICAN CENTER		SCALE:	REVISION:
SHAHEED MINAR		N.T.S.	0
DETAIL OF CIRCULAR PLATE		DWG. SHEET:	7 OF 8

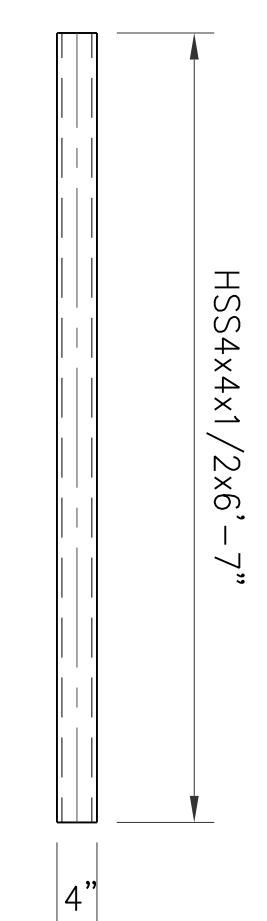
NOTES:
1. FOR GENERAL NOTES SEE SHEET 1



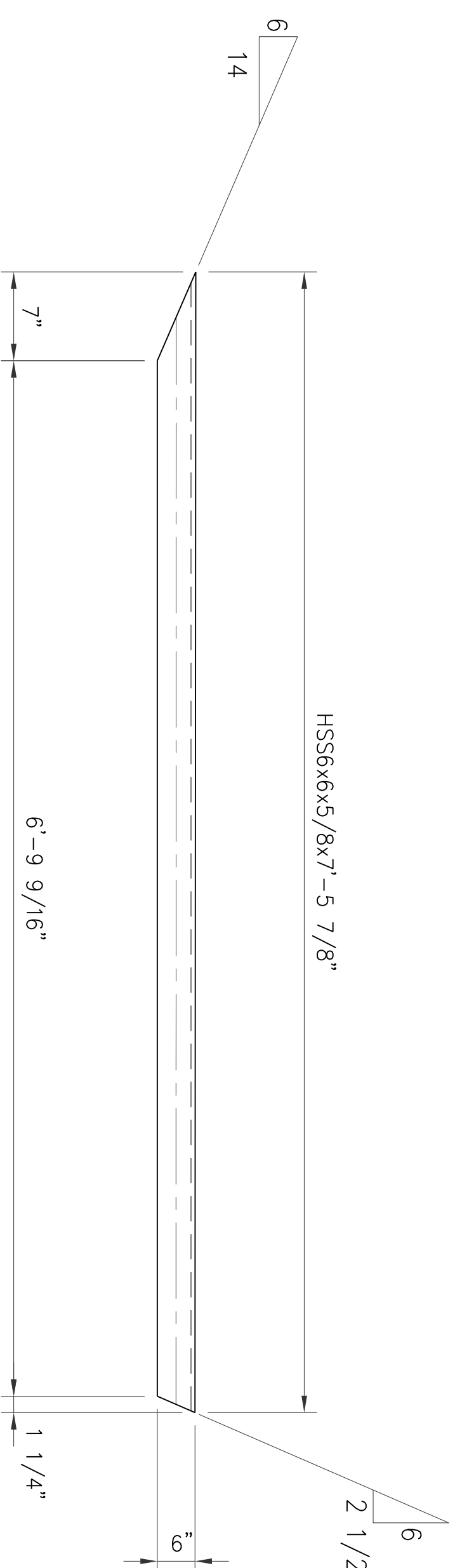
2-POST-8P1



4-FRAME-8FR1



2-FRAME-8FR2

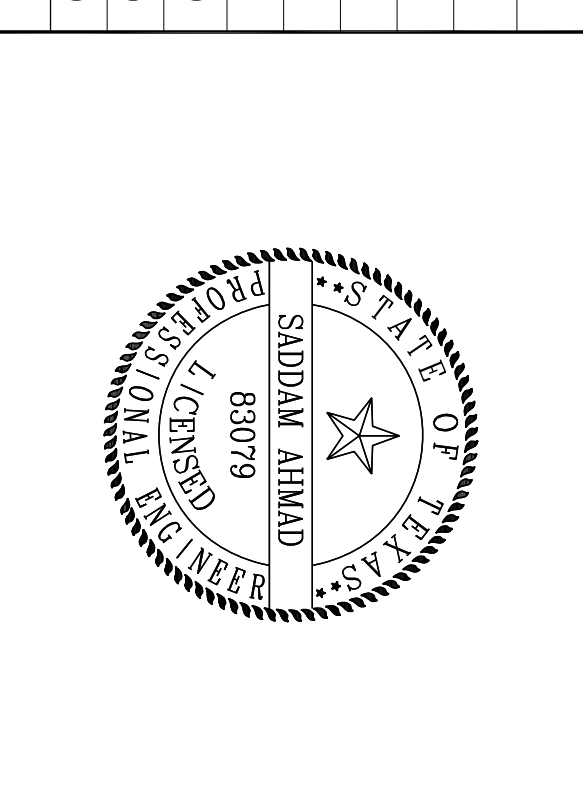


2-BRACE-8VB1

REF. DRAWINGS

DWG. NO.	DESCRIPTION
SHEET NO. 2	SHAHEED MINAR PLAN VIEW
SHEET NO. 3	SHAHEED MINAR ELEVATION VIEW
SHEET NO. 7	DETAIL OF CIRCULAR PLATE

NO.	BY	DATE	REVISION
Δ	NH	06/29/10	APPROVED FOR CONSTRUCTION
∇	NH	05/20/10	REVISED FOR APPROVAL
∇	MSJ	03/09/10	ISSUED FOR APPROVAL



<p>ENGINEERING ALLIANCE INC. F-10447</p>		<p>SHAHEED MINAR FRAME DETAIL</p>	
DRAWN BY:	DATE:	STRUCTURAL ENGINEER:	PROJECT NO.:
MAHS	06/29/10	Engineering Alliance Inc.	BAC10003
<p>BANGLADESH AMERICAN CENTER</p>		REVISION:	SCALE:
		0	N.T.S.
		W.D. NO.:	DWG. SHEET:
			8 OF 8